

Annandale | Maple Lake | Clearwater | South Haven

Summer Guide 2024

Events | Dining | Entertainment | Parks | Recreation



Financial Solutions *for Every Season*



LAKE CENTRAL

BANKING • INSURANCE • INVESTMENTS



Bank On The Go.
Get Our App Today!

OFFICE PHONE

Annandale 320-274-8216

Clearwater 320-558-2271

Maple Lake 320-963-3163

EMAIL

service@lakecentral.bank

www.lakecentral.bank





WATERFRONT

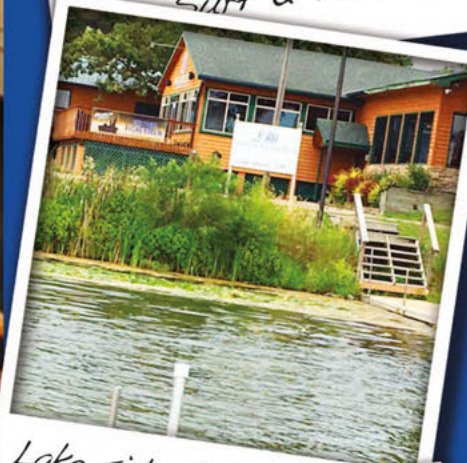
LAKESIDE GRILLE



Dining Room



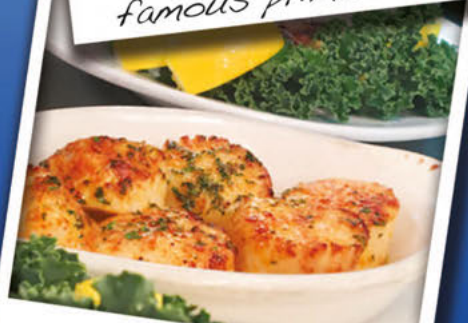
Surf & Turf



Lake side dining



Try our famous prime rib



**Come Join Us for an Excellent
Lake View and Dining Experience!**

~ Annandale Fire Department PULL TABS & ETABS!

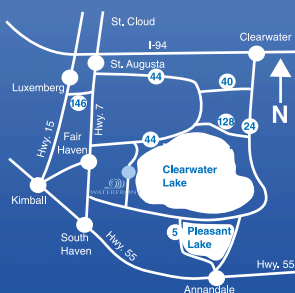
~ FULL Bar & Dining Menu

- USDA Choice Steaks • Seafood • Salads • Pastas • Prime Rib (Fri. & Sat.)
- Famous BBQ Ribs (Best in the Area!)

come aboard. 

Hours: Tues.-Thurs. 4 p.m.-Close; Fri., Sat. & Sun. 11 a.m.-Close
320-274-9988 www.waterfrontlakesidegrille.com

13195 Bayview Rd., South Haven
Located on the West shore of Clearwater Lake.



ATM Available

Explore Summer

in the  of the Lakes Area

Welcome	6	Cabin Life	54
Local Events	8	Lake Associations	54
Celebrate Fourth of July	18	Parks & Recreation	56
Summer Concert Series	19	Outdoor Attractions	57
History Happened Here	20	Clear Waters Outfitting	60
Local Shops	22	Fields of Dreams	61
Dining & Entertainment	30	Wright County Parks	62
Cruise On In	34	Camps	63
Farmers Market	37	True Friends is a True Gem	64
Area Map	40-41	Mississippi River State Water Trail	64
Swap Central	42	Tee It Up	65
Pioneer Paradise	44	Area Churches	68
Plenty of Great Food Options	46	Schools & Communities	70
Life on the Lake	48	Annandale Schools	70
Catch a Fish	49	City of Annandale	71
The Secret Sauna City	51	City of South Haven	72
Area Lakes	52	Chamber of Commerce	73
Do Your Part	53	Area & Downtown Advertisers	74-76
		Index of Advertisers	77

ANNANDALE Advocate

Paw Publications, LLC



Email

news@annandaleadvocate.com



Website

www.annandaleadvocate.com



Facebook

www.facebook.com/AnnandaleAdvocate

Contributors to the Summer Guide include the writers noted within these pages and Advocate staff members Andrew Enninga, Mary Christen, Amanda Menden, Allan Mooney and Steve Prinsen.

© Copyright May 2024, Paw Publications, LLC

320-274-3052, Call or go online to subscribe

Cover design by Andrew Enninga, photo by Mary Christen

**you might not know we have life, home,
auto and business insurance. now you do.**
simple human sense



LAKE CENTRAL
INSURANCE SERVICES

Annandale*Maple Lake*Clearwater
agency@lakecentral.bank
320.274.8216
lakecentral.bank

Auto-Owners
INSURANCE

LIFE • HOME • CAR • BUSINESS



Locations:

940 Elm St E, Annandale MN 55302
24142 Smiley Rd, Nisswa MN 56468

Contact Information:

320-274-6336 or 877-365-4034
Backyardmn.com
info@backyardmn.com



BACKYARD
REFLECTIONS

We Create Outdoor Dreams



WELCOME

Annandale

HEART OF THE LAKES

Welcome to summer in the Heart of the Lakes. It's that brief time of year when there are so many choices and not enough time, when you can dig into life's sand bucket and make a castle or two before the season becomes a distant memory.

Here's hoping you enjoy your summer and what it has to offer - whether it's on the lake fishing or boating, in your backyard or at one of the many area community events that provide fun for all ages throughout the summer.

You can smell the grill, you can hear the children play, you can see the sunsets and listen to the wildlife scurry about. Indeed, it's the time of year when all of nature awakens.

In the Heart of the Lakes Summer Guide we've put together some of the best of what the Annandale-South Haven area, the Heart of the Lakes, has to offer. We've blended some history, stories on local attractions and a lot of other fun and interesting information to help you better plan your summer.

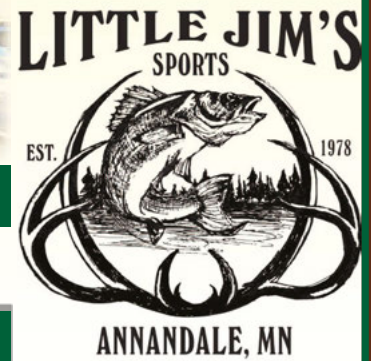
Enjoy the season. It's our hope that you spend your leisure time with family and friends, making memories that will be cherished many years from now. Whether you're a visitor, a summer homeowner or a resident, stay safe in your travels and be respectful of others and nature.

Enjoy your summer!

**WE HAVE THE LARGEST SELECTION OF LIVE BAIT,
FISHING TACKLE & HUNTING SUPPLIES IN THE AREA!**

SERVICES

- › Resident & Non Resident Hunting & Fishing Licenses
- › Marine Batteries
- › Life Jackets
- › Line Winding
- › Paddle Board, Kayak & Swim Pad Rentals
- › Propane Fill Station
- › Lake Area Maps
- › Irish Setter Boots
- › Over 800 Fishing Rods & Reels
- › ATV Trailers
- › Guns
- › Ammo



FREE Line on any Reel (with purchase of any reel)

900 Elm St., Hwy 55 E, Annandale, MN 55302 • **(320) 274-5297**

www.littlejimssports.com

Celebrating 50 Years!



ANNANDALE 320.274.5737 | WWW.OAKREALTYMN.COM | MAPLE LAKE 320.963.2088



— Explore — **LOCAL EVENTS**

The Heart of the Lakes area is home to a wide variety of annual events that please visitors and residents alike. Some of the key events that take place during the summer months include the annual Fourth of July festival in Annandale, Buffalo Days, Gear Head Get Together in Maple Lake, the Eddy Trail Races in Annandale, Buffalo and Clearwater rodeos, Annandale Chamber Golf Tournament and the free concert series to name just a few.



MAY



ANNANDALE ALL-CITY GARAGE SALE

Saturday, May 4: There will be something for everyone at Annandale Chamber's annual city-wide sale, which has been held for more than 40 years. Look for many sales around town. Check your Advocate for listings.

CINCO DE MAYO

Sunday, May 5: A celebration of Mexican heritage and culture.

SADDLE CLUB TRAIL RIDE

Sunday, May 5: The Silver Bullet Saddle Club will host an 11 a.m. trail ride at Sibley State Park. Visit silverbulletssaddleclub.com to RSVP and for more information.

MINNESOTA FISHING OPENER

Saturday, May 11: This is the opening date for most game fish in Minnesota. See the Advocate for more on the opener.

MOTHER'S DAY

Sunday, May 12: Celebrate mom today and every day.

WWII-RE-ENACTMENT

Saturday and Sunday May 18, 19: Minnesota Pioneer Park Minnesota Pioneer Park, Annandale, will host an Armed Forces Event Saturday and Sunday, May 18 and 19, at the park. Saturday hours at 10 a.m. to 5 p.m. and Sunday hours are 10 a.m. to 3 p.m. There will be a World War II re-enactment with displays, military vehicles, demonstrations and more. There is a pancake breakfast Sunday, May 19, from 8 a.m. to 1 p.m. Watch the Advocate or go to the website for more information, www.pioneerpark.org.

PANCAKE BREAKFAST

Sunday, May 19: From 8 a.m. to 1 p.m., Minnesota Pioneer Park will be hosting a pancake breakfast with all-you-can-eat pancakes. Go to the web-



CHILI COOK-OFF

site for more information, www.pioneerpark.org. Proceeds go to the park

CHILI COOK-OFF

Saturday, May 25: Sample homemade chili at many participating businesses and organizations during the Annandale Chamber's annual Chili Cook-off. See the Advocate for more details.

MEMORIAL DAY BREAKFAST

Monday, May 27: Annandale Boy Scout Troop 354 will hold its annual Memorial Day Pancake Breakfast from 8 to 11:30 a.m. at the pavilion in the park. Veterans eat free. The scouts are assisted by the Annandale Lions Club.

MEMORIAL DAY CEREMONIES

Monday, May 27: The Annandale Memorial Day Parade and Remembrance Service begins at 10 a.m. The parade proceeds along Oak Avenue to the city park and continues to Woodlawn Cemetery for services. Everyone is



JOIN US FOR

SUMMER EVENTS IN BUFFALO!

Occasional Sales

First Thursday through Sunday of each month

Concerts in the Park

Every Thursday Night June 27th - August 29

Farmer's Market

Every Saturday May 4-October 26, 8 to noon

BUFFALO DAYS - JUNE 9-16

Carnival	Movie in the Park	Beer Garden	Fireworks	Grand Parade
June 13-16	June 13, 9 a.m.	June 14 6 p.m.	June 14 10 p.m.	June 15 6 p.m.

» **Buffalo PRCA Championship Rodeo** | June 20-22

» **"My Fair Lady" Community Theater** | July 19-21 & 24-27

» **41st Annual Art & Craft Fair** | Sat., August 17 • 9 a.m.-3:30 p.m.

» **Classics by the Lake Car Show** | Sat., September 7 • 10-2 p.m.

» **Street Party of Hope** | Thurs., September 12 • 4 p.m.

763-682-4902 | BuffaloChamber.org





Minnesota Pioneer Park's

2024 EVENTS

Armed Forces Event

World War II Re-Enactment

Rendezvous Encampment

May 18 • 10 am-5 pm

May 19 • 10 am-3 pm

Maple Syrup Pancake Breakfast

May 19 • 8 am-1 pm

Picker's Fest/Car & Antique Tractor Show

June 8 • 10 am-3 pm

Country Church Services

June 30 • 2:30 pm

Fall Festival / Pork Chop Feed

September 21 • 11 am-2 pm

Fall Pancake Breakfast

October 6 • 9 am-1 pm

Halloween Spooktacular

October 26 • 5-8 pm

Pioneer Christmas & Meat Raffle

December 7 • 11 am-2 pm

MINNESOTA PIONEER PARK

SUMMER HOURS - Tues. - Fri. 9 am - 3 pm • Sat.-Sun. 10 am - 3 pm • Closed Monday

• Call ahead before coming, we are a volunteer run organization

Highway 55 E., Annandale • 320.274.8489 • www.pioneerpark.org

invited. Check the Annandale Advocate for up to date information. Memorial Day honors those who have lost their lives in battle in service to their country.

WRIGHT COUNTY SWAPPERS MEET, THREE DAY HOLIDAY EVENT

Friday -Sunday May 24-26: The Wright County Swappers Meet will be open Friday, Saturday and Sunday of the holiday weekend.



JUNE



MAPLE LAKE ALL-CITY GARAGE SALES

Saturday, June 1: Maple Lake's All-City Garage Sale is sponsored by the Maple Lake Chamber of Commerce. Visit www.maplelakechamber.com for more information.

SUMMER READING PROGRAM

Monday, June 3 to Saturday, Aug. 3: Great River Regional Library starts its Summer Reading Program for children ages 0-12. The theme is "Read, Renew Repeat" For registration details, visit www.griver.org or contact your Great River Regional library. In Annandale, call 320-274-8448. The library is open various hours five days a week, including Saturdays.

HIKING WRIGHT

Thursday, June 6: Join Wright County Parks in this hiking program that offers diverse trails for all experience levels. You will be guided through scenic landscapes and learn about nature, safety and more, 7 to 8:30 p.m., Robert Ney Memorial Park, east unit. Go to www.co.wright.mn.us/parks for more information.

FRIDAY NIGHT SUMMER CONCERT SERIES

Friday, June 7: The kickoff to the Friday Night Summer Concert series, the first of six free concerts on the portable stage at Annandale Municipal Park.

MEMORIAL DAY



Bring your lawn chairs to the concerts that begin at 7 p.m. In case of rain, concerts will be at Annandale High School. The concerts are sponsored by the Annandale Area Community Team (ACT) and Annandale Community Education.

PICKERS FESTIVAL, & CAR & TRACTOR SHOW

Saturday, June 8: Minnesota Pioneer Park will host this annual event that pays homage to the past at the park. Visit the website www.pioneerpark.org for more information.

BUFFALO DAYS

Sunday to Sunday, June 9-16: This eight-day festival every June attracts large crowds to Buffalo. There is a full slate of activities during the week, as well as weekend fun including fireworks on Friday night and a movie in the park. For more information visit www.buffalochamber.org, and see the chamber's ad in this guide.

Annandale Laundromat

The Answer to Your Laundry Problems!



AIR CONDITIONED

- Downtown location / shop while you wash!
- Plenty of self-service machines. Change Available
- Large Washers & Dryers, Instant Hot Water Wash.

Bright, clean, affordable & convenient!

★ Open 6 a.m.-9 p.m., 7 days a week ★
Main Street (Oak & Cedar) Annandale

Phone 612-868-0724



TRUCK MATE TOPPERS

TRUCK ACCESSORIES & TOPPERS

- Tonneau Covers
- Brush Guards
- WeatherTech Floor Liners
- Running Boards
- Rock Tamer Mud Flaps
- Bed Liners



540 Elm St. E, Annandale, MN • 320.274.3008
Open Mon.- Thurs. 8 a.m.- 6 p.m., • Fri. 8 a.m.-Noon



www.truckmatetoppers.com



ANNANDALE AMBASSADOR SOCIAL

Wednesday, June 12: The Annandale Ambassador Committee will host a social at 6:30 p.m. at the Municipal Park Pavilion for Fourth of July Miss Annandale candidates and the present ambassadors. The public is invited to attend.

HEART OF THE LAKES CRUISE IN

Friday, June 14: The first of the season cruise in. Line up on Cedar Street by city hall to Excelsior Avenue between 5 and 8 p.m. Everyone is welcome – cars, trucks, and motorcycles. There is no registration required, and there will be a food shelf at the Clock Tower. This event is sponsored by Annandale Area Chamber of Commerce

FATHER'S DAY

Sunday, June 16: Say thanks to dad today.

FLAG DAY

Friday, June 14: Take a moment to appreciate our nation's banner and what it represents.

ANNANDALE FARMERS MARKET

Saturday, June 15: The Annandale Farmers Market is set to begin its 15th season from 8 a.m. to noon at City Hall Square. The market runs every Saturday through the last weekend of September.

BUFFALO CHAMPIONSHIP RODEO

Thursday-Saturday, June 20-23: The 70th annual Buffalo PRCA Championship Rodeo will take place at 7 p.m. each day. For more information and tickets, visit www.buffalorodeo.com.

CHAOS IN CLEARWATER DEMO DERBY

Friday and Saturday June 21-22: This event will be held at the Silver Bullet Saddle Club grounds in Clearwater. Performances start at 6 p.m. both nights. Visit silverbulletsaddleclub.com for ticket and more information. See the ad on page 14.



HEART OF THE LAKES CRUISE-IN

Let's go cruisin'

The Annandale Chamber of Commerce is again sponsoring the "Heart of the Lakes Cruise In" on four Friday nights this summer, June 14, July 12, Aug. 9, and Sept. 13 (the second Friday of the month). The events are from 5 to 8 p.m. each night, so cruise on in.

- Everyone is welcome – trucks, cars and motorcycles
- Bring a food shelf item or a cash donation. A food shelf truck will be at the Clock Tower Park.
- No registration required, and there is no cost
- Lineup is on Cedar Street by City Hall and will extend to Excelsior Avenue.



*Over 35 Years of Experience
Building Custom Homes*

Rory Norgren

Cell: 320.980.1166

Office: 320.274.5884

Fax: 320.274.5883

Email

werace@lakedalelink.net

16628 45th St. N.W., Annandale MN.

"BUY WITH CONFIDENCE"

"SELL WITH SUCCESS"

*Serving the West Metro, Sherburne,
Stearns and Wright County Areas*

www.westmetrorealestategroup.com

Email: terriagent@gmail.com



TERRI ERICKSON
612.889.2808

KRIS ERICKSON
612.242.3932

Rollie Werner
Well Drilling
Water is our business!

Residential, Cabin, Farm, Irrigation

OVER 30 YEARS EXPERIENCE IN WELL & PUMP SERVICE

CALL ROLLIE OR JAKE, 320-980-1212 + 320-420-2762

320-274-3856 + TOLL FREE 866-363-8886

FRIDAY NIGHT SUMMER CONCERT SERIES

Friday, June 21: The second of the Friday Night Summer Concert series of six free concerts on the portable stage at Annandale Municipal Park. The Russell Schmidt Duo will perform. Bring your lawn chairs to the concerts that begin at 7 p.m. In case of rain, concerts will be at Annandale High School. The concerts are sponsored by the Annandale Area Community Team (ACT) and Annandale Community Education.

ANNANDALE FARMERS MARKET

Saturday, June 22: The Annandale Farmers Market is open from 8 a.m. to noon at City Hall Square. The market runs every Saturday through the last weekend of September. It attracts about 20 vendors as well as special events throughout the summer.

OLD SETTLERS PICNIC

Saturday, June 22: Fair Haven celebrates its heritage with the annual Old Settlers Day Picnic at the park. The parade starts at 10 a.m. with many other activities throughout the day.

FAMILY PICNIC IN THE PARK

Thursday, June 27: Join Wright County Parks for this family event from 6 to 7:30 p.m. at the east unit of Robert Ney Memorial Park near Maple Lake. There will be games, activities and refreshments. Go to www.co.wright.mn.us/parks for more information.

KICKOFF TO THE FOURTH OF JULY GALA

Friday, June 28: This annual gala held at 7 p.m. at Southbrook Golf Club kicks off Annandale's historic celebration. Meet the reigning ambassadors and the prospective candidates.

ANNANDALE CAR SHOW

Saturday, June 29: Classic Rides and Rods will host this annual show from 9 a.m. to 1 p.m. There will be live music and much more. Visit the www.classicridesandrods.net for more information.



ANNANDALE FARMERS MARKET

Saturday, June 29: The Annandale Farmers Market is open from 8 a.m. to noon at City Hall Square. The market runs every Saturday through the last weekend of September. It attracts about 20 vendors as well as special events throughout the summer.

ANNANDALE AMBASSADORS CAR WASH

Saturday, June 29: The Annandale Ambassadors will host their annual car wash at the fire station from 10:30 a.m. to 1 p.m. Have your vehicle washed by the candidates.

PIONEER CHURCH SERVICE

Sunday, June 30: Minnesota Pioneer Park will host its annual Country Church Service at 2:30 p.m. Visit the park's website www.pioneerpark.org for more information.



As your local, family-owned community bank, Star Bank offers a complete range of personal and business banking products to fit your unique needs. Need a loan to purchase lakeshore property, a new cabin, agricultural equipment, or a recreational vehicle? We've got you covered! Convenient ATMs, Mobile App with full suite of digital banking services, and Voice Banking are also available.

Have a safe and happy summer in the Heart of the Lakes!

Annandale
460 Elm St. E.
(320) 274-BANK (2265)

Maple Lake
100 State Hwy. 55 E.
(320) 963-3161

Online: www.star.bank
Mobile: Star Bank MN





JULY



FOURTH OF JULY CELEBRATION

Wednesday, July 3 to Sunday, July 7: Annandale's historic annual Fourth of July celebration includes a parade, multiple concerts, carnival, food, fun, games and activities. Discount carnival ride tickets will be available at some local chamber businesses before the week arrives. The celebration is sponsored by the Annandale Area Chamber of Commerce. Check the chamber's site, www.annandalechamber.org, and www.annandale4thofjuly.org. Also, see the article in this guide on page 18.

MUSIC IN THE PARK

Wednesday, July 3: As part of the Fourth of July celebration, the Annandale Community Band will preform at 7 p.m. at the municipal park.

FOURTH OF JULY PARADE, CORONATION, MORE

Thursday, July 4: The parade begins at 10 a.m. and will feature bands from the surrounding area, a performance by the Annandale Middle School Band and the Annandale High School Drumline. The parade is one of the highlights of the celebration. Get your spot on the route early. The coronation is at 5:30 p.m. at the municipal park, and the Fabulous Armadillos perform at 7 p.m. with a huge fireworks display at dusk. See the article in the guide on the Fourth festivities, page 18.

MUSIC IN THE PARK

Friday, July 5: As part of the Fourth of July celebration, Concrete Jesus will perform from 6 to 8:30 p.m. at the municipal park.

WRIGHT COUNTY SWAPPERS MEET, THREE DAY EVENT

Friday-Sunday, July 5, 6, 7: The popular Swappers Meet will be open extra hours over the holiday weekend. See the ad on page 16.



Alyssa Radisewitz Domagala, Agent
Annandale, MN 55302
alyssadomagalaagency.com
(320) 274-5900

**There's no place like
Annandale.**

And, like you, we're happy to call it home. And we're
proud to be here celebrating 14 years of service.
Thank you for your business and your trust.



American Family Mutual Insurance Company,
S.I. & its Operating Companies, American Family Insurance Company,
6000 American Parkway, Madison, WI 53783
002130 - Rev. 11/16 ©2016 - 21443573

ALL STAR CLOWN SHOW



FIRECRACKER 5K RUN-WALK

Saturday, July 6: As part of the Fourth of July activities, the St. John's Firecracker 5K run-walk begins at 8 a.m. in downtown Annandale. The course has been moved this year and will run alongside Pleasant Lake and back. Watch for more information.

ANNANDALE FARMERS MARKET

Saturday, July 6: The Annandale Farmers Market is open from 8 a.m. to noon at City Hall Square. The market runs every Saturday through the last weekend of September. It attracts about 20 vendors as well as special events throughout the summer.

KIDDIE PARADE

Saturday, July 6: The Fourth of July annual Kiddie Parade starts at 10:30 at Annandale Middle School. It runs through downtown Annandale.

ENJOY LIFE AT THE LAKE MORE

With our cabin care services, we'll take care if it!

AEROSEAL DUCT SEALING

Offering Aeroseal Duct Sealing to keep you cool in the summer and warm in the winter!



QUALITY YOU CAN FEEL.

Count on **HOWARD'S** to help you select and install the plumbing, heating and air conditioning products you need so you can get on with enjoying life.

TEMPSTAR®
Heating and Cooling Products

Serving the greater Annandale area since 1961

HOWARD'S

Plumbing, Heating & Air Conditioning, Inc.

715 Norway Drive E, Annandale • 320-274-8913

WWW.HOWARDSPLUMBINGINC.COM

MUSIC IN THE PARK

Saturday, July 6: As part of the Fourth of July celebration, the West Metro Big Band will perform from 7 to 8 p.m. at the municipal park.

HIKING WRIGHT

Thursday, July 11: Join Wright County Parks in this hiking program that offers diverse trails for all experience levels. You will be guided through scenic landscapes and learn about nature, safety and more, 7 to 8:30 p.m., Stanley Eddy Regional Park. Go to www.co.wright.mn.us/parks for more information.

HEART OF THE LAKES CRUISE-IN

Friday, July 12: The second cruise in event of the summer. Line up on Cedar Street by city hall to Excelsior Avenue between 5 and 8 p.m. Everyone is welcome — cars, trucks, and motorcycles. There is no registration required, and there will be a food shelf at the Clock Tower. This event is sponsored by Annandale Area Chamber of Commerce.

FRIDAY NIGHT SUMMER CONCERT SERIES

Friday, July 12: The third of the Friday Night Summer Concert series of six free concerts on the portable stage at Annandale Municipal Park. The Tuxedo Band will perform. Bring your lawn chairs to the concerts that begin at 7 p.m. In case of rain, concerts will be at Annandale High School. The concerts are sponsored by the Annandale Area Community Team (ACT) and Annandale Community Education.

ANNANDALE FARMERS MARKET

Saturday, July 13: The Annandale Farmers Market is open from 8 a.m. to noon at City Hall Square. The market runs every Saturday through the last weekend of September. It attracts about 20 vendors as well as special events throughout the summer.

GEAR-HEAD GET TOGETHER



TERRELL X PERFORMANCE

Saturday, July 13: Terrell X will perform from 10 a.m. to noon at the Farmers Market. He will teach about human beat boxing and live performance. Everyone is invited to come and also take the stage. This program is sponsored by the Annandale Area Public Library and is made possible through Legacy funding.

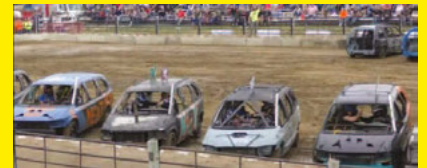
WRIGHT COUNTY FAIR

Wednesday to Sunday, July 24-28: The Wright County Fair will be held at the fairgrounds in Howard Lake. Lots of family activities for all ages, including a car show, mud truck racing, motorcycle show, bull riding, demo derbies, tractor and truck pulls, carnival rides and more. For a schedule of events, visit www.wrightcountyfair.com, and watch the Advocate for updates.



CHAOS IN CLEARWATER DEMO DERBY

- FRI., JUNE 21ST - 6 PM
- SAT., JUNE 22ND - 5 PM



VISIT WWW.SILVERBULLETSADDLECLUB.COM OR OUR FACEBOOK PAGE
FOR UP TO DATE EVENT DETAILS AND TICKET INFORMATION



CLEARWATER RODEO

THURSDAY, AUG. 15
7 p.m. Performance
Kids Night 5-7 PM

FRIDAY, AUG. 16
7 PM Performance
Dance to follow with
'Drop Tailgate'

SATURDAY, AUG. 17
6 PM Performance
Dance to follow with
'Mason Dixon Line'



THANK YOU TO OUR SPONSORS

West Wind Shelters • Northridge Express, Inc • Clear Lake Lions • Parts City Auto Parts of Clearwater • The Boot Shack • Clearwater American Legion • Arnolds • Pioneer Critical Power • ImholteExcavation and Septic • Bronson Electric • American Heritage Bank • Kwik Trip • Twin City Garage Door • Lake Centra Bank • Flintstones Lounge • Clearwater Lions • Clearwater Travel Plaza • McDonald's Meats • Telcom • ML Schendzielos Excavating • JSA Services • Ziegler Cat • Larry Carlson Trucking • Lawn Rangers LLC • Mathison Motors • Bud Light • Bernick's Pepsi

ANNANDALE FARMERS MARKET

Saturday, July 20: The Annandale Farmers Market is open from 8 a.m. to noon at City Hall Square. The market runs every Saturday through the last weekend of September. It attracts about 20 vendors as well as special events throughout the summer.

FRIDAY NIGHT SUMMER CONCERT SERIES

Friday, July 26: The fourth of the Friday Night Summer Concert series of six free concerts on the portable stage at Annandale Municipal Park. The Annandale Community Band will perform. Bring your lawn chairs to the concerts that begin at 7 p.m. In case of rain, concerts will be at Annandale High School. The concerts are sponsored by the Annandale Area Community Team (ACT) and Annandale Community Education.

ANNANDALE FARMERS MARKET

Saturday, July 27: The Annandale Farmers Market is open from 8 a.m. to noon at City Hall Square. The market runs every Saturday through the last weekend of September. It attracts about 20 vendors as well as special events throughout the summer.



AUGUST



ANNANDALE FARMERS MARKET

Saturday, Aug 3: The Annandale Farmers Market is open from 8 a.m. to noon at City Hall Square. The market runs every Saturday through the last weekend of September. It attracts about 20 vendors as well as special events throughout the summer.

NATIONAL NIGHT OUT

Tuesday, Aug. 6: Get together with your neighbors and participate in this community-building event. Annandale holds up to five neighborhood celebrations that feature police, fire and other agencies. Come on out for food, fun, kids activities and more.



NATIONAL NIGHT OUT

HEART OF THE LAKES CRUISE-IN

Friday, Aug. 9: The third event of the summer. Line up on Cedar Street by city hall to Excelsior Avenue between 5 and 8 p.m. Everyone is welcome – cars, trucks, and motorcycles. There is no registration required, and there will be a food shelf truck at the Clock Tower. Sponsored by the Annandale chamber.

FRIDAY NIGHT SUMMER CONCERT SERIES

Friday, Aug. 9: The fifth of the Friday Night Summer Concert series of six free concerts on the portable stage at Annandale Municipal Park. The Under Cover Band will perform. Bring your lawn chairs to the concerts that begin at 7 p.m. In case of rain, concerts will be at Annandale High School. The concerts are sponsored by the Annandale Area Community Team (ACT) and Annandale Community Education.



REICH'S

Plumbing & Heating

"Service is our Business. Big or small, we do it all!"

Tired of Waiting? Call Reich's, We'll make you our top priority!

We're here for all your plumbing, heating & AC needs.

www.reichsplumbingandheating.com

Gary 320-274-3016 • Dustin 320-493-8945

Father & Son, Serving the Annandale area Since 1994 PM 066712
45+ Yrs. Exp. • Dependable - Reasonable - Free Estimates - 24 Hr. Service



M&M

EXPRESS

SALES & SERVICE



MAPLE LAKE - BUFFALO - ST. CLOUD

BIG LAKE - BRAINERD

www.mmexpresssales.com

We sell and service top brands like Toro, STIHL, Cub Cadet, Husqvarna, eXmark & more!

MARVIN



WELCOME COMFORT INTO EVERY ROOM

When you bring natural light and fresh air deeper into your home, it can change how you think, feel, and work in your space. At Marvin, windows and doors are designed to open new possibilities, helping you feel connected to the outdoors.

Visit your local Marvin dealer to experience windows and doors differently.



Maple Lake MN
320-963-3612

©2021 Marvin Lumber and Cedar Co., LLC.

KIMBALL DAYS

Friday to Sunday, Aug. 9, 10, 11: This community-wide annual celebration includes many activities. See details at www.kimballareachamber.com.

ANNANDALE FARMERS MARKET

Saturday, Aug. 10: The Annandale Farmers Market is open from 8 a.m. to noon at City Hall Square. The market runs every Saturday through the last weekend of September. It attracts about 20 vendors as well as special events throughout the summer.

ALL-STAR CLOWN SHOW

Saturday, Aug. 10: Annandale High School, 6:30 p.m. Come, enjoy and watch more than 60 clowns perform at this free family show from the Mooseburger Clown Camp. The clowns, who come from all across the country, will be back for another performance. They will be at clown camp preparing the week of the show. Watch the Advocate for more information.

EDDY TRAIL RACES - LAKE SYLVIA AREA

Saturday and Sunday, Aug. 10, 11: Come for a weekend of races based at Chi Rho Center on the south side of Lake Sylvia, on the outskirts of Annandale. The 50k and a half marathon will run through the Stanley Eddy Park Reserve. There is a 5k and 50k on Saturday and a half marathon on Sunday. Races start in the morning. For more information, visit www.running-tangents.com/eddytrailraces.

COKATO CORN CARNIVAL

Monday to Wednesday, Aug. 12-14: Come enjoy the annual Cokato Corn Carnival with a parade, prizes, coronation, live music and more. There is free corn-on-the-cob served at the event. Watch the Advocate for more information. Go to www.connectwithcokato.com/cokato-chamber.

CLEARWATER RODEO

Thursday to Saturday, Aug. 15, 16, 17: The 44th annual Clearwater Rodeo includes performances at 7 p.m. on Thursday, 7 p.m. on Friday and 6 p.m.

on Saturday. A rodeo dance immediately follows the rodeos on Friday featuring Drop Tailgate, and Saturday featuring Mason Dixon Line. Free pony rides will also be available Friday night. Mutton busting will be available for kids ages 5-7 sign up required, see website for more details.. For more information see the ad on page 14 of this guide or visit www.silverbulletssad-club.com.

ANNANDALE FARMERS MARKET

Saturday, Aug. 17: The Annandale Farmers Market is open from 8 a.m. to noon at City Hall Square. The market runs every Saturday through the last weekend of September. It attracts about 20 vendors as well as special events throughout the summer.

GEAR-HEAD GET TOGETHER, MAPLE LAKE

Saturday, Aug. 17: The show and swap meet runs from 8 a.m. to 5 p.m. in downtown Maple Lake. Bring your cars, trucks, rods, motorcycles, scooters, tractors, snow machines and more. This annual event attracts thousands of fans from a large area. Food, beverages and live music. For more information go to www.gearheadgettogether.net.

BUFFALO ARTS & CRAFTS FESTIVAL

Saturday, Aug. 17: The annual Buffalo Arts and Crafts Festival runs from 9 a.m. to 3:30 p.m. in downtown Buffalo. Approximately 100 plus arts and crafts vendors with all of the trimmings. See the Buffalo Area Chamber of Commerce ad in this guide.

FRIDAY NIGHT SUMMER CONCERT SERIES

Friday, Aug. 23: The final of the Friday Night Summer Concert series of six free concerts on the portable stage at Annandale Municipal Park. The Castaways will perform. Bring your lawn chairs to the concerts that begin at 7 p.m. In case of rain, concerts will be at Annandale High School. The concerts are sponsored by the Annandale Area Community Team (ACT) and Annandale Community Education.



We're nearby when you need us.

At Stellis Health, it's our priority to know and care for you. After all, we're your neighbors.

Conveniently located in Buffalo and Monticello, Stellis Health provides comprehensive primary and specialty medical care for all ages. With same-day appointments and Urgent Care, we can care for your entire family when and where you need us.

Call **763-684-3600** to schedule your appointment.
Learn more at StellisHealth.com.

Stellis Health

Neighbors Caring for Neighbors

Wright County Swappers Meet

Minnesota's Largest Seasonal Outdoor Flea Market!

54th YEAR!

Open EVERY Saturday, April through October



HOLIDAY WEEKEND SCHEDULE:

Open Friday, Saturday & Sunday Holiday Weekends!

Memorial Day - May 24, 25 & 26

4th of July - July 5, 6 & 7

Labor Day - Aug. 30, 31 & Sept. 1

• Gates open for shopping 1/2 hour before sunrise

• FREE admission and parking for visitors

Dealers! Set up on your trailer or tables, food and ATM on grounds. Setup begins 12 noon the day before sale begins.

Clean out garages, basements & children's rooms. What you can't use, someone else can! Turn unwanted items into CASH!

More information at wrightcountyswappersmeet.com

13594 100th St. NW, South Haven • Kevin & Laurie Miller • 320-274-9005
3 mi. W of Annandale on Hwy. 55, 2 mi. N on CR3, 1/4 mi. E on 100th St NW

WOMEN, WINE & WATER

Friday, Aug. 23: Join Wright County Parks in this event for women ages 21-plus. Spend the evening kayaking, followed by a wine tasting and charcuterie boards at sunset on the Bertram Chain of Lakes, 6 to 8:30 p.m. There is a fee. Go to www.co.wright.mn.us/parks for more information.

ANNANDALE FARMERS MARKET

Saturday, Aug. 24: The Annandale Farmers Market is open from 8 a.m. to noon at City Hall Square. The market runs every Saturday through the last weekend of September. It attracts about 20 vendors as well as special events throughout the summer.

FEAST OF FRIENDS

Saturday and Sunday Aug. 24, 25: A celebration of friends and food from 4 to 8 p.m. each night at the Boathouse at Tween Lakes. This event is an outgrowth of the former Field to Feast event and attracts hundreds. Watch for ticket information.

ANNANDALE FARMERS MARKET

Saturday, Aug. 31: The Annandale Farmers Market is open from 8 a.m. to noon at City Hall Square. The market runs every Saturday through the last weekend of September. It attracts about 20 vendors as well as special events throughout the summer.



SEPTEMBER



WRIGHT COUNTY SWAPPERS MEET, THREE DAY EVENT

Fri.-Sun, Aug. 30, 31, Sept. 1: The popular Swappers Meet will be open extra hours over the holiday weekend. See the ad on page 16.

LABOR DAY

Monday, Sept. 2: Make the most of this symbolic end of summer. Labor day honors American workers.

FIRST DAY OF SCHOOL

Tuesday, Sept. 3: Classes begin in the Annandale School District.

ANNANDALE FARMERS MARKET

Saturday, Sept. 7: The Annandale Farmers Market is open from 8 a.m. to noon at City Hall Square. The market runs every Saturday through the last weekend of September. It attracts about 20 vendors as well as special events throughout the summer.

CLASSICS BY THE LAKE CAR SHOW

Saturday, Sept. 7: The Classics by the Lake Car Show will be held from 10 a.m. to 2 p.m. in Sturges Park by Buffalo Lake in Buffalo. See the ad in this guide or visit www.buffalochamber.org for more details.

STREET PARTY OF HOPE

Thursday, Sept. 12: This annual Buffalo celebration begins at 4 p.m. See the Buffalo chamber ad in this guide for more information.

HEART OF THE LAKES CRUISE IN

Friday, Sept. 13: Line up on Cedar Street by city hall to Excelsior Avenue between 5 and 8 p.m. Everyone is welcome – cars, trucks, and motorcycles. There is no registration is required, and there will be a food shelf at the Clock Tower. This event is sponsored by Annandale Area Chamber of Commerce.

ANNANDALE FARMERS MARKET

Saturday, Sept. 21: The Annandale Farmers Market is open from 8 a.m. to noon at City Hall Square. The market runs every Saturday through the last weekend of September. It attracts about 20 vendors as well as special events throughout the summer.

GEAR HEAD GET TOGETHER



MINNESOTA PIONEER PARK FALL FESTIVAL

Saturday, Sept. 21: From 11 a.m. to 2 p.m. the popular park will celebrate the harvest. There will be many events, including a pork chop dinner. See the ad on page 9 for more information. The website is www.pioneerpark.org.

ANNANDALE FARMERS MARKET

Saturday, Sept. 28: This is the final Saturday of the Annandale Farmers Market. It is open from 8 a.m. to noon at City Hall Square. It attracts about 20 vendors as well as special events throughout the summer.



Celebrate FOURTH OF JULY

For more than 125 years Annandale residents have united to celebrate the Fourth of July as a city, and have welcomed many visitors for the festivities.

Over time, the celebration has grown from a single-day affair featuring a pair of area orators and a brass band from Kimball to a nearly week-long celebration of American heritage with a wide variety of entertaining events.

The first organizers in 1889 would be astounded to see today's 100-plus unit parade, the whirling, rushing rides of the carnival, and the captivating fireworks display. They would be mystified by the boat parade on Pleasant Lake, the crowds reaching up to 10,000 people, and the street dances at night.

Some elements, however, would remain familiar, such as the festive wind tunes from the Annandale Community Band, a general sense of patriotic pride and perhaps even the basic elements of the modern softball games.

In all things, today's event coordinators work to preserve some of the favorites from previous years while bringing a variety of new entertainment into the mix.

Schedule of events

This year's celebration extends from Wednesday, July 3, to Sunday, July 7.

■ The Annandale Ambassador dessert social to introduce the Miss Annandale royalty candidates will take place at the City Park Pavilion beginning at 6:30 p.m. on Wednesday, June 12. The Kick-Off to the Fourth of July Gala will be held at 7 p.m. at the Southbrook Golf Course, lower level, on Friday, June 28.

■ The celebration opens with the carnival opening at 4 p.m. on Wednesday, July 3. Each year the carnival spreads out over a few city blocks near Municipal Park on Oak Avenue north of downtown with an assortment of food, rides and games that the whole family will enjoy.

Local food vendors will also be on hand along with the carnival's food vendors. Other Wednesday events include



an evening performance by the Annandale Community Band.

Celebration centerpiece

The centerpiece of the celebration are all of the events on Thursday, July 4. The parade, which begins at 10 a.m., includes around 100 floats, cars, bands and more that fill Park Street, Main Street and Chestnut Street. Grab your spot early!

In addition to colorful floats and exotic displays, the parade will feature an assortment of musical talent. Parade entries can vie for most entertaining in the float contest.

The carnival re-opens immediately after the parade at noon, with bingo from noon to 6 p.m., and at 5:30 p.m. a new Miss Annandale will be crowned at 5:30 p.m. the park.

The Fabulous Armadillos will return to play the Fourth of July concert in the park at 7 p.m. and will play until 10. The Armadillos have drawn some of the largest crowds in memory during their recent performances. Once dusk settles in, a large fireworks display will light up the town from an offshore platform, capping off a long weekend and a great

day celebrating the country's independence.

■ Events continue on Friday, July 5. The carnival opens at noon there is a live music performance at night, Concrete Jesus. There will also be the traditional fundraisers of Cake by the Lake and Brownies with the Band each evening.

■ The Firecracker 5K has been

moved to downtown Annandale on Saturday, July 6, 8 a.m. start.

The kiddie parade begins at 10:30 a.m. through the downtown streets. A number of activities get underway at noon or earlier at the park, including the men's softball tournament. This year there will also be a kiddie tractor pull at noon at the park. The West Met-

ro Band performs in the evening, among other activities.

■ Sunday also includes activities including a co-ed softball tournament, bingo and the carnival.

■ Check the Annandale Advocate this summer for more details. There is also a website devoted exclusively to Annandale's Fourth of July activities, www.annandale4thofjuly.org.



SUMMER CONCERTS IN THE PARK SERIES

Annandale's Summer Concert Series returns to the Annandale Municipal Park this summer with six bands Friday nights in June, July and August.

The free concerts are a time to enjoy great music by the lake on Annandale's portable stage.

The concerts bring together friends and neighbors, as well as summer lake home owners, and visitors as well.

Plan to bring your lawn chair or blanket, relax and enjoy great music on the shores of Pleasant Lake. Each concert begins at 7 p.m.

If it rains, the shows will move to the Annandale High School auditorium. The Arts and Culture Committee of the Annandale Area Community Team (ACT) and Annandale Community Education sponsor the ongoing concert series.

At the publication of the Summer Guide, five of the six bands were set. The first concert, June 7, is to be determined. Check the Advocate for updates or the City of Annandale's Facebook page.

The Russell Schmidt Duo, June 21

The Russell Schmidt Duo will perform Friday night, June 21. He is a seasoned musician and will play many of your favorite tunes. Hailing from St. Paul, Schmidt is a musician who specializes in light, soft rock, Americana, and Folk Rock genres. He thrives on engaging with live audiences, and his amiable demeanor and love for entertainment kindle a spark in the crowd, leaving a lasting impression.

Russell's extensive range of guitar styles enables him to forge connections and share his emotions openly with his listeners, using a resonant voice that can fill even the most expansive venue.



The Tuxedo Band, July 12

The Tuxedo Band will perform Friday, July 12. They are a premier Twin Cities cover band, and they are familiar to the Annandale area.

They provide an entertaining performance packed with songs from the past six decades and today. The Tuxedo Band is the Twin Cities' longest-running cover band of classic and contemporary rock, pop and country music.

They are multi-talented musicians and singers, the six-piece band delivers superb harmonies, great music and memorable moments.

Annandale Community Band, July 26

The Annandale Community Band will perform the evening of Friday, July 26. Under the direction of Barbara Jacobson, the band has grown to about 40 members.

The band celebrated its 30th year in 2023. The band performs a wide ranging show that everyone will enjoy.

Under Cover Band, Aug. 9

The Under Cover Band will perform Friday, Aug. 9.

The Castaways, Aug. 23

The Castaways will perform the final concert of the season, Friday, Aug. 23. Best remembered for their 1965 garage rock song "Liar-Liar," The Castaways are a nationally known Minnesota-based rock 'n' roll band that audiences have been demanding and enjoying for years. The Castaways provide an exciting show with great sound and lights, from community concerts, fairs and festivals, country clubs, and wedding receptions.

The band features a versatile song list and plays the hits from artists like Bruce Springsteen, Elvis, Buddy Holly, the Beatles, Beach Boys, Johnny Cash and Neil Diamond.

The Castaways put on a show for all ages, with lots of audience interaction.

From their famous hula-hoop contest to audience sing-a-longs, you will surely be entertained at a The Castaways show.

HISTORY HAPPENED HERE

*Reprinted from the Dec. 18, 1913,
Annandale Advocate*

Annandale is situated on the Soo Line, 51 miles west of Minneapolis and has a population of about 800 inhabitants. As a resident point, Annandale is abreast of the age in natural beauty.

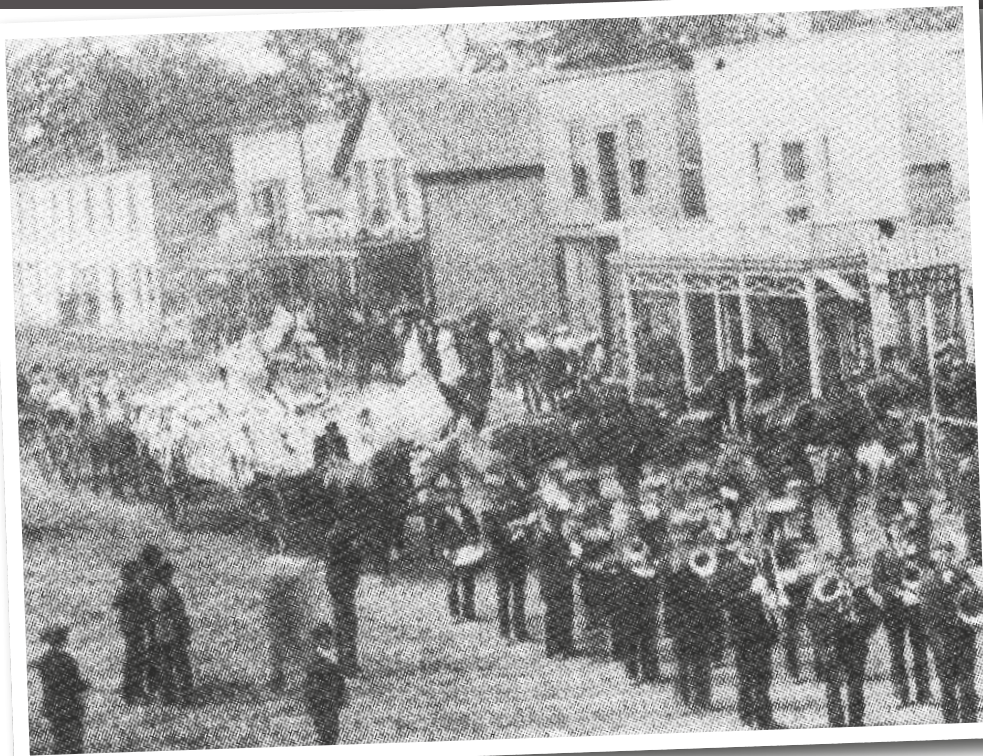
Its beautiful natural scenery and lakes that abound with all kinds of fish attract people from all parts of the United States during the summer months. It has become an ideal place for tourists and has a number of beautiful summer resorts within a radius of six miles.

In writing a history of a village it is of course necessary to give a few facts about the early happenings in the locality that afterward is embraced in the village. And as Annandale is in the township of Corinna, it will be well to say that Corinna was cut out of the district in early times known as the Big Bend which embraced all the country south of Clearwater and west of Monticello. The name is said by the late Levi M. Stuart, of Minneapolis, to have been given to the township by Elder Robinson, a Baptist preacher who was a boyhood chum of Stuart's. Both were born in Corinna, Maine.

The locality in about where Annandale is now located went through the usual pioneer period, and some of the early landmarks are still visible on the lake shore where the early settlers fortified themselves in a wooden fort and defended themselves from an enemy that did not dare to attack.

In the year 1885 rumors were current about a railroad that would be put through the next year, very much as the reports we are now getting of the proposed electric lines that are being talked of. The new road was to be named the Minneapolis & Pacific, and sure enough the next year the road was laid out and the townsite of Abbyville was put on the map.

It remained there until it was time for a post office to be established, and it was found that there was one town of that name in the state.



Historic Fourth of July

Sen. Washburn was asked to give the place a new name and as stated he looked around for something to suggest itself. He saw the name of the actress, Lizzie Annandale, suspended across the street and from this he gave the present name.

The land in which the greater part

1891 and was buried at Clearwater.

The townsite of Annandale was platted in October 1886. Quite a number of lots were sold on Oak Avenue the same fall and winter. The first man who erected a building on his lot was John H. Buri, who opened up his hardware store Jan. 1, 1897.

Early 1900s

In the early 1900s, the Annandale Electric Light and Power Company was formed as a local stock company made up of the citizens of Annandale. With 24-hour service, it was considered very successful in service to the town and from a financial standpoint. The Annandale Council granted an electric light franchise to the Public Service Company in March of 1916. In 1929, Northern States Power Company put up lines to furnish the farmers and lake dwellers with electricity.

In the early 1900s, one of the duties of the Marshal, Owen Groves, was to keep the old-fashioned street lamps clean and full, and to light them every evening at dusk.

Annandale's first Fourth of July

Annandale's first Fourth of July celebration was held in 1889. The village council and citizens began to plan for a rousing celebration. Nearly all the citizens of the village were on some of



Clearwater Lake

of the village is located was owned by James M. Pratt, a very friendly and easy going kind of a man who gave an undivided one half of his land for a townsite, W.D. Washburn owning the other half. Pratt had a very high opinion of the future of the village and took great pride in all the improvements and settlements that went on during his life and it is too bad that he could not have lived to see more of the village. He was accidentally killed by his own .22 rifle near where the cemetery is now located in September

Legends & Lore

the committees and pulled together to make Annandale's first celebration the best in the county. It was proposed by some and generally agreed to, that the funds remaining after the celebration were to be equally divided between the M.E. church and the Annandale school.

Sen. A.Y. Eaton of Buffalo, and Honorable C.M. King of Fair Haven, were secured as orators of the day. The Kimball brass band was employed to furnish music during the day.

There was a general turnout by the surrounding country and neighboring villages. The Annandale celebration passed off as a great success in every respect, and was one of the biggest advertisements for the new growing village at that time.

'Abbeville'

The variety of theories on just how Annandale got its name reflects the nature of the place in which it lies. And there's no disputing the Heart of the Lakes claim.

It is here that folks will tell you about the settling days of what was called Abbyville in the 1890s.

When time came for a post office, the Abbyville name had been taken by another Minnesota location.

It was up to local Senator Washburn to figure out just what the name should be.

Legend has it that he looked out of his St. Paul office window and saw a marquee on a theater that said 'Lizzie Annandale To-night.' The rest is history.

Or bunk, if you ask county officials. They say the city was named after the port and river they call Annan in Scotland.

North, to Clearwater Lake, is where you will hear the very true story of the late Frank Ledwein.

On July 10, 1952, the bait shop owner

landed a 55-pound, five-ounce carp.

Not a log or outboard motor, as he first thought, but a female carp over 42 inches long and 31 inches around. It was a world record catch until it was later broken.



Bungalow Island

That old carp probably knew all about the mystery that shrouds Bungalow Island in the lake's upper portion.

First resorts

Clearwater was a home to the state's first resorts and Bungalow had a dandy built in 1915. Cofield's Hotel had its own ferry from Annandale and was host to visitors from all over.

Prohibition and anti-gambling laws led to the decline of the get-away and it was eventually destroyed by the owner.

Innuendo has surfaced since - full of gangsters and possible murders - and bones found there have strengthened the rumors.

Be careful as you pass in your boat.

You will find little remnants of the past when it comes to resorts in the area. In the '50s and '60s, Annandale resort owners posted signs along Hwy. 55 from the Twin Cities boasting about the 50 resorts in the area.

Southwest of Clearwater Lake and across Hwy. 55 lies West Lake Sylvia and the adjoining East Lake Sylvia.

Children have a ball on the docks here as perch nibble on their toes in clear view.

This is one of the clearest freshwater lakes in the state with visible depths up to 23 feet.

It is the one place in the area that requires an angler to be smarter than the fish. It sees you and you see it. Will it

spook or take your bait?

Two-bit scoundrels

In the late sweltering summer of 1903 the peaceful towns of Annandale and South Haven became the target of some two-bit, gun totin' scoundrels. They roamed around the county robbing stores, farm houses and just other general brands of thievery.

On Wednesday, Sept. 30, 1903, one of the outside agitators hit an Annandale store, which led to a shootout in South Haven two days later.

The thief made off with goods and loot totaling \$60.20, then fled to a box car, where his gang of ruffians were hiding out.

The county sheriff was called and two days later W.G. Young and a couple of his deputies rode the train up to Annandale.

In Annandale they were joined by town constable Walters and some others.

The officers got to the gang in the box car but were overtaken in their ambush attempt.

Sheriff Young was grazed on the cheek by a barrage of gun fire, before South Haven residents came to the rescue.

The gang fled to the woods, but the posse was hot on their tail.

The good guys surprised the bandits and killed the thief who had robbed the store. The remainder of the six-man gang surrendered after being hit with some birdshot.

The survivors, after medical attention, were taken into custody and the 1903 South Haven Bandit Raid legend was born.

Before white settlers

Before there were any white settlers in the Annandale area, the "Big Woods" were the homes of many different nations of American Indians.

The natives of the land would visit the area in the early spring months to collect sap from the sugar maples to make syrup.

The Indians would also take advantage of the fish moving into shallow waters to spawn. They would net and spear what they needed for the summer.

The image shows the interior of a shop. On the right, there are wooden shelves against a light green wall, displaying various items including jars, boxes, and a sign that says "FRESH HERBS". Below the shelves is a counter with a brick-patterned front. On the counter, there is a small white sign with a YouTube logo and a chalkboard sign that reads "BE joyful IN HOPE. patient IN AFFLICTION. faithful IN PRAYER. ROMANS 12:12". A green towel is hanging on the wall to the right of the counter. The ceiling is dark with a track of three spotlights. The floor is covered with a patterned rug. On the left, there is a red overlay with white text.

Explore LOCAL SHOPS

Annandale's Main Street got a welcome facelift in 2020-21 as the street was completely rebuilt. The wooden canopies which adorned the downtown businesses for almost 40 years were removed, and widened sidewalks and awning-style canopies were added, including plantings and other amenities.

The result is a welcoming, pedestrian-friendly city that displays Annandale's unique downtown. Today, there are many shops and restaurants, as well as other retail and professional business that make up the downtown.

Here is a sampling of the shops, which reveal a wide variety of unique gift shops, art and craft galleries, fine dining and coffee stops, jewelry and more.

Little Treasures Gift Shop

You may want to begin your treasure hunting at Little Treasures Gift Shop, located in the former Judy's Cottage building. The store carries a wide variety of fun and unique toys, games, books, puzzles, baby items and gifts in all price ranges. Little Treasures also specializes in lake area gifts and souvenirs.

The store stocks a wide variety of glassware, cutting boards, picture frames, and wooden maps etched with one of the Annandale area's many lakes. Custom etching is also available.

Put more fun in your life with a stop at Little Treasures.

Willow

Just up the street a few doors is one of Annandale's newest shops, Willow, which opened in the winter of 2024.

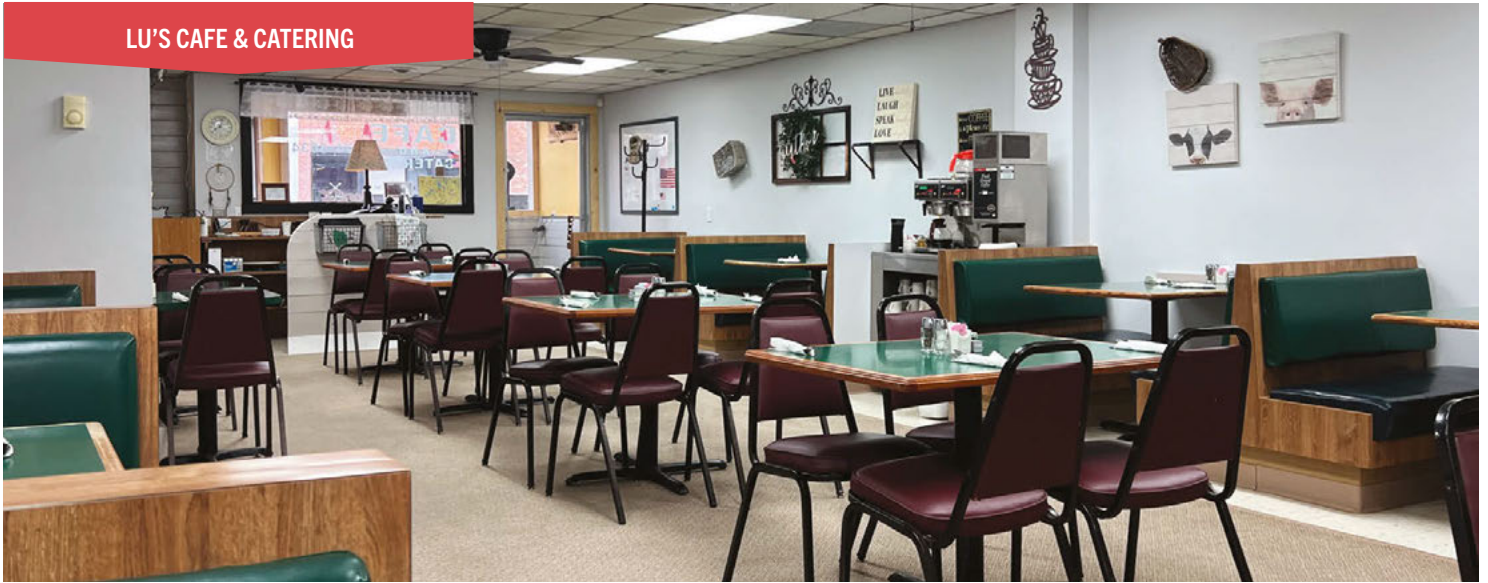
Christy and Topher McKinlay did extensive remodeling to the location which was once the Annandale Post Office but most recently was the office of Village Properties and opened Shore House Outfitters.

Anna Gravening bought the shop in late 2023 and it has become Willow. Gravening operated Willow Farms in Maple Lake until moving to Main Street Annandale.

Willow has a northwoods feel and carries a variety of items, including decor, women's clothing, gifts and more. The store's items change with each season.

Willow is a must-stop on your stroll through downtown Annandale.

LU'S CAFE & CATERING



Annandale Advocate

Across the street is the Advocate, where you can pick up books by local authors that will give you a glimpse into the interesting tales that make up this small town's past, including "Memories of Annandale" by Lotus Williams.

For current information, pick up the Annandale Advocate, the community's award-winning newspaper with roots that date to 1887. It is Annandale's oldest continuous business.

Lu's Cafe and Catering

Two doors down from the Advocate office is a comfortable place for breakfast and lunch. Lu's Cafe and Catering, with its large dining area and tasty food, is a fine place to relax and socialize. Breakfast food is served at all times, and customers are encouraged to stay awhile and enjoy the fine food and wonderful staff.

After being closed for two seasons, because of the pandemic, the eatery re-opened in the spring of 2023.

WATERFRONT • RESIDENTIAL • ACREAGE

Call any of our agents for proven results
& ask about our *WOW* factor service!



Jim Splinter, Realtor®.....320-980-0560

Patrick Splinter, Realtor®612-437-1383

Rick Seagraves, Realtor® 320-282-5656

Candice Lehn, Realtor® 763-744-6124

Nancy Loidolt, Realtor®.....651-235-3709

Ron Sherwood, Realtor®..... 763-442-5949



Located on Main Street, 64 Oak Ave. S

www.EdinaRealty.com



ANNANDALE ART AND TEXTILE CENTER



Grandpa Earl's Country Store

At the end of the block is Grandpa Earl's Country Store. It is much larger than some of the other shops on Main and is divided into themed rooms that are as art worthy as the paintings they sell and frame.

A walk down "the garden path" consisting of a cobblestone trail painted on the floor, will lead you past murals and artfully arranged displays that makes it feel like strolling through a garden. It's a great way to get ideas for your own space.

Like many stores on Main Street, Grandpa Earl's has done

a good deal of renovating its building, and it blends nicely into the downtown.

Zahler Photography

In the summer of 2018 Dan Zahler and Zahler Photography moved from the corner of Oak and Chestnut to just around the corner on Chestnut.

The former Annandale State Bank building (Lake Central) is now David Burd's State Farm Agency, which was formerly located about a block north on Oak.

Zahler Photography specializes in high school senior portraits, but also covers a wide array of school activities, children and families, sports and weddings.

VINTAGE

Patina

Timeless Treasures & Local Artisan Creations

Antiques • Collectibles

Gifts • Furniture • Fun

Wed.-Sat. 10 am – 5 pm

131 Cedar St. W.
Annandale, MN 55302

320-261-5267

www.facebook.com/VintagePatinaAnnandale

FOR THE COMMUNITY, IN THE COMMUNITY

The Annandale Advocate has been telling the stories of our area for more than **125 YEARS!** Community and school news, local government, local sports, opinion, community events and everything in between is covered every week in the pages of the Advocate and online.

Subscribe today for just **\$39 per year** or **\$35 for our e-edition.**

Call or stop by our office, or go online to www.annandaleadvocate.com and subscribe any time.



ANNANDALE Advocate

320-274-3052 • PO Box D, Annandale, MN 55302

www.annandaleadvocate.com • ads@annandaleadvocate.com

Annandale Art and Textile Center

Owners Joe and Elizabeth Bayer bought the former “All Things Good” building (across from Kaz Hardware) and started this art haven. They are a non-profit that provides training and employment to individuals with a variety of abilities.

The store offers artwork, unique gifts, creative classes (including how to weave) and more. Recently, they expanded next door and purchased and remodeled a former dental office, so that the center could provide more training and better serve its customers and the area.

It's a “must stop” if traveling down Main Street.

Kaz Hardware

Kitty corner from State Farm is Kaz Hardware, Annandale's longtime hardware store. Ed and Donna Kaz came to town in 1958. It has been a fixture in town ever since.

Their son, Joe, owns the store and has all your hardware and rental needs in addition to small and major appliances, gift items, garden tools and supplies, other seasonal items and much more.

Whether you're in need of items for a fix-it-quick day at the lake or a larger-scale project, Kaz Hardware has the right equipment and the expertise to share some friendly advice.

Annandale Embroidery

Annandale Embroidery and Apparel has been a fixture of downtown since 2006. They are a custom apparel shop specializing in embroidery and heat printing services to outfit businesses, organizations and teams of all sizes. All work and services are done in house.

In 2023, laser engraving was added to their service offerings.



Miller's

J E W E L R Y

Exceptional jewelry, friendly service,
and quality on-site repair

PROUDLY CELEBRATING
75
YEARS IN THE FAMILY
Since 1949



86 Oak Ave. N, Annandale | (320) 274-5313 | millers-jewelry.com

ALSO ON



SWEET ESCAPE



Their large retail area is filled with Cardinal spirit wear, Annandale and lake-centric clothing and hats, and many non-apparel items as well.

Sweet Escape

Continuing north, Sweet Escape is the fun sweet shop with the easily identifiable aqua-striped awning. They have been in business since June of 2020.

The shop is owned by Annandale residents John and Terri Dyer.

Items available in the shop include super premium ice cream, Minnesota-made chocolates, ultimate sundaes, cakes

with real ice cream, nostalgic candy, bath products, and unique gifts for everyone.

With friendly customer service, and an amazing atmosphere, Sweet Escape, is a must stop for those with a sweet tooth or those who know someone with one – in other words, everyone.

Tin Roof Candle Company

Tin Roof Candle Company is Annandale's newest addition to Main Street. Opened in the summer of 2023, Jenifer Munson makes her own candles from natural and synthetic ingredients. They are made to strict safety standards. Tin Roof holds workshops on candle making and sells other



WE TURN 1 ON MAY 27!

ANNIVERSARY COUPON

ENJOY
10% OFF
Your TOTAL Purchase!
Expires: Oct. 31, 2024

Custom Scent Bar
—
Regional Artists
—
Unique Gifts
—
Holistic Wellness

SUMMER HOURS
Thurs. 11am-4pm
Fri. 11am-5pm
Sat. 9am-2pm
Sun. 11am-2pm

**46 Oak Ave. N,
Annandale
320-291-4437**

Tin Roof Candle Co.
45.2611° N, 94.1242° W

www.tinroofcandlecompany.com



Lakeside Garden Center

Annuals • Perennials • Baskets • Trees • Shrubs
• Pottery • Clothing • Garden Gifts • And more!

612-351-6363

9706 105th St. NW, Annandale, MN 55302
www.lakesidegardenmn.com

Kaz Hardware & Rental Center

Do it Best

Hardware • Housewares • Tools • Plumbing • Paint • Electrical
Lawn & Garden • Mower & Saw Sharpening • Window & Screen Repair

WE HAVE ALL YOUR GRILLING & SMOKING NEEDS!

RENT IT HERE!

Stump Grinders, Mini Excavator, Toro Dingo & Attachments, Trenchers, Hole Diggers, Scaffolding, Trailers, Tampers, Jackhammers & Much More!

Main Street • Annandale, 320-274-5214

www.kazhardware.doitbest.com

products as well.

Grey Duck Screen Printing and Apparel

Grey Duck Screen Printing and Apparel is just up the street. It's owned by Kindra and Jerry Liebhard.

Grey Duck specializes in screenprinting for businesses and organizations. If you need something screenprinted for your business or organization, Grey Duck will take care of you.

They also have retail items on sale, including Cardinal gear and fun lake apparel.

Miller's Jewelry

Keep north, across the street across from the post office, and you will find Miller's Jewelry in a classic, attractive building. Jim and Amy Miller took ownership from Mark and Laurel Miller in 2011, becoming the third generation of the family to offer fine jewelry and many services from the store. Mark's father Lee owned the store before him.

The building itself has been continuously operated as a jewelry store since 1892. The iconic store brings in shoppers from a wide area. When visiting Annandale, you will not want to miss this stop.

You'll find a wide selection of diamond engagement and wedding rings, and beautiful fashion styles. Miller's is also known for its custom work. All work is done in-house, and the expert, friendly staff will assist you with any question you may have.

City Hall Square

From Miller's Jewelry, cross the street and head east toward the post office, and continue toward "City Hall Square." This is the location of the Annandale Farmers Market on Saturday mornings throughout the summer growing season.



In Hot Water

The former Cafe Jules is now In Hot Water, which was formerly located across the street.

The historic building is the perfect spot to stop for a break. This traditional gathering spot has expanded its offerings since moving into the new location. Stop in for coffee, breakfast item, lunch and more. In Hot Water is owned by Megan Champlin and Nikki Seaberg.

While there, look around – the walls feature original works from several local artists. They also feature local wares including honey, lotions, soaps, wild rice and more. In Hot



320.980.1699

AVAILABLE SIZES

10' X 10'

10' X 20'

10' X 30'

10' X 40'

20' X 20'

20' X 40'

950 Custer St. W., South Haven

Easy access just west of South Haven on the corner of Hwy 55 & Cty. Rd. 2

sylviastorageunits@gmail.com

Water has been an Annandale fixture since 2000.

Sylvia+Louisa

Across from In Hot Water, you will find a cute boutique that supplies trendy, affordable women's clothing and accessories.

Owners Sarah Onstad and Missy Hardin opened the boutique in July of 2020. The fun clothing and accessories will tempt your pocketbook!

Kat's Lake Country Antiques

Add a short distance to your journey by heading west down Cedar Street to the former Annandale Co-op Creamery building, and you'll be at Kat's Lake Country Antiques, which opened in the winter of 2022.

You might say that antiques are in owner Kathleen Nystrom's blood. The Annandale native along with a number of vendors are located on Maple Avenue at the former Vintage Style Market location. There you can step back in the past and browse countless antiques beautifully displayed in a rustic setting.

Vintage Patina

From Kat's, go west a few short steps and you're at Vintage Patina. Owners Tiera Marsh and David Anderson remodeled the classic building, the former Petty Bros. Meat Market, keeping some of the original architecture with the old style block wall and windows.

This timeless treasures and local artisan creations shop features specialty antiques, collectibles and furniture, as well as unique, handmade goods produced by local artisans. It is well worth the trek west of Main Street to see the fun items of the past. You will not want to miss this stop to com-

plete your journey.

More eats, drinks

Annandale's downtown boasts three bars that all offer a variety of beverages and have their own kitchens: Billy D's Crooked Tavern, the Stadium, and the Rendezvous Bar and Grill, which has expanded to include a retail store that offers, beer, wine and other spirits.

Each has its own hometown flavor and feel, and often features local musicians on the weekends.

The Thayer Hotel Dining (see inset) also is an authentic, tasty stop you will want to visit. Whether you're looking for casual dining, or a more intimate experience, this is a unique stop.

JUST OFF MAIN...

Homestyle Country Cafe – Situated on the south side of Highway 55 at the edge of Annandale's downtown, the people at this friendly restaurant serve up tasty meals with a small town flavor.

Lakeside Nutrition – Next to the Lake Region Cenex Gas Station on Highway 55. They offer nutritious shakes, teas and more in a variety of flavors. Be sure to check them out the next time you're in town.

Thayer Hotel Dining – The historic Thayer Hotel re-opened its doors in the spring of 2018. Longtime restaurateur Bob Krebsbach and members of his family operate the busy facility that fronts Highway 55. The Thayer dates to 1889, and it's Annandale's only structure that is on the National Register of Historic Places. Come hungry! See the story in this Guide.

Malco

PROUD

to be part of the

Annandale Community

for over **50 YEARS!**



Malco Tools, Inc. • 14080 State Hwy 55 NW • Annandale, Minnesota 55302-0400 • www.malcotools.com

Schultz 
Soft Water Inc

 Kinetico®
water systems

Authorized, Independent Kinetico Dealer

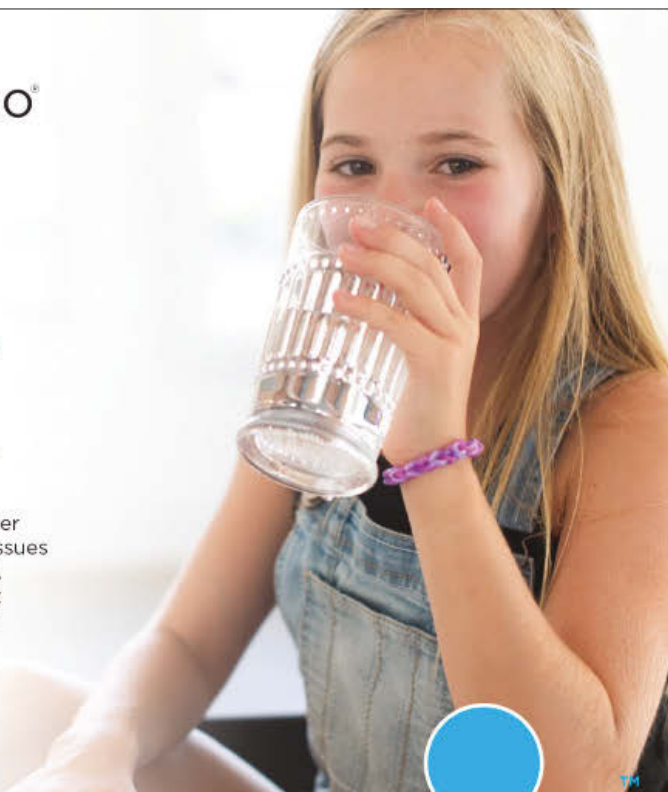
WHAT'S YOUR WATER SCORE?™

**Your water score indicates the quality of your water.
The higher your water score, the better your water.**

If you don't know your water score, look around your home. Your water score may be low if you see scale buildup around fixtures, you have issues with your water-using appliances or you suffer from dry skin and hair. Maybe your drinking water tastes or smells funny, or you worry about possible contaminants in your water. There could be many signs that suggest your water score isn't as high as it should be.

Experience life with a higher water score today!

320-251-4100 | SchultzSoftWater.com



30

40

50

60

70

80

90

100

Laketown Dental

Family • Implant • Cosmetic • Orthodontics • Invisalign

*Dr. Eric & Dr. Meghan Rambow proudly
serving Annandale and the surrounding area!*



Eric Rambow, DDS



Meghan Rambow, DDS

**New patients always welcome!
Check out our website for more information!**

**300 Park St E
Annandale, MN 55302
320-274-8555**

Hours: Mon.-Thur. 8 a.m.-5 p.m., Friday by appointment

www.laketowndental.com

A close-up photograph of food grilling on a black metal grill. In the foreground, a large piece of grilled steak is topped with a sprig of fresh rosemary. To the right, several stalks of green asparagus are grilling. In the background, three ears of yellow corn are grilling, showing some charred spots. The entire scene is set against a dark, textured background.

— Explore — **DINING & ENTERTAINMENT**

The essence of community can be found in the Annandale area's many civic events, and deeper relationships can be forged around the table at any number of fine establishments found nearby.

In fact, that act of sharing a meal and conversation inspired a small group of community residents to organize the first Field to Feast event in 2016 that brought about 200 diners together on Oak Avenue near Municipal Park at the close of summer. In 2019, more than 300 gathered, even though the event had to be brought indoors. After a pandemic hiatus, the event returned in 2022 and is now the Feast of Friends.

Those and other events are visible demonstrations of the connection between food and hospitality the community has produced in recent years. The same principal of food as a conduit to fellowship applies to any group of people that chooses to visit one of the area's fine establishments to share a meal, beverages and time together.

The Annandale area boasts a wide variety of restaurants to suit just about any taste. There are places that specialize in breakfast and lunch. There are lake establishments that include a great view with the meal. There are numerous places to enjoy a favorite style of burger, sandwich or pizza, and quality options for many other foods as well.

In the same way that food can bring people together, entertainment does the same by providing a common attraction. And those who live in the area year-round or simply visit have many opportunities that include the Summer Concert Series, the Farmers Market, the 4th of July and other events. Read on to find out more.

Maple Lake American Legion

EVERY MONDAY SLIDER NIGHT 4-8 pm

2 SLIDERS w/FRIES \$4. ADD CHEESE FOR 50¢ MORE!

EVERY WEDNESDAY 75¢ WING NIGHT 4-8 pm

MINIMUM ORDER OF 6 PER FLAVOR: PLAIN, BBQ, TERIYAKI, SWEET CHILI OR BUFFALO. (NO TO GO ORDERS)

FULL MENU MON.-FRI.

BURGER & FRYER MENU AVAILABLE ON SATURDAY & SUNDAY

SATURDAY & SUNDAY, LIMITED MENU 11:30 -?

Come in & try one of our in-house made pizzas!

BAR BINGO Every Tuesday 6:30 pm, 12 Regular Games, 2 Progressive

LEGION MEAT RAFFLE Fridays 5:30 pm & Sundays 3 pm,
Fridays & Sundays includes a \$2/\$40 Meat Raffle Package

PULL TABS AVAILABLE DAILY

Gambling Lic. #00623

**SERVING FOOD
7 DAYS A WEEK**

**OPEN TO
THE PUBLIC!**

**PATIO
IS OPEN**

American Legion Club



American Legion Post 131 • Maple Lake • 320-963-3911

Come Join Us!



BAR & GRILL

Fantastic Food • 20 Beer Taps
Open Tue-Sun 11am-Close

SUNDAY FUNDAY!

**Live Music &
Meat Raffle
1:00pm!**



**Awesome
Patio!**

Visit our Goataritaville Bar



**Join us at the
Swappers Meet
for Beer &
Bloody Marys!**



VIEW MENU



Only 15 Min Away • Downtown Watkins • 320.764.GOAT

Stop in today to satisfy that craving
with a sip, nibble or treat.

HOURS

Monday - Friday: 7am - 5pm
Saturday: 7am - Noon
Sunday: Closed

CONTACT

320-274-6828
20 Cedar Street East, Annandale
InHotWaterCoffee.com



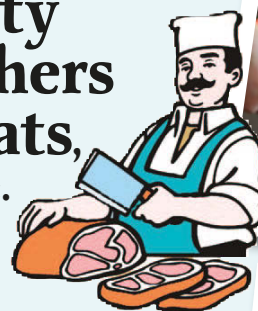
IN HOT WATER

Coffee Shop

ANNANDALE, MN



Petty Brothers Meats, Inc.



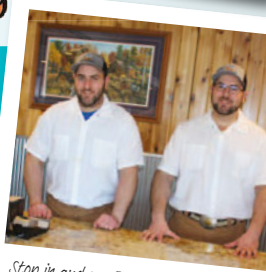
Quality Fresh Cut Meats

★ Grand Champion Award
Winning Products

★ Quality Fresh Meats

★ Custom Processing

★ Retail Sales



Stop in and see Bob & Tom Petty Today

Homemade Brats • Burgers • Steaks • Much More

Call 320-274-5615

Proudly serving you for over 40 years

Located on HWY. 55, Annandale, MN

www.pettybrothers.com

Get your next
meal at The
Bistro



Annandale Health
&
Community Services
Care from the Heart



Open For Breakfast & Lunch
Mon.-Fri. 7:00 a.m.-3:00 p.m.

Located Inside Pleasant Vista Senior Living - 700 Park St. E, Annandale
Check us out online at annandalecarecenter.org/bistro
and follow us on Facebook @PleasantVistaBistro



New
Extended
Hours!

Call ahead to order your chicken for any sized party!

**Full Menu
Available for
Dine In or Take Out
OPEN 7 DAYS
A WEEK**

Hours:

Sun. 7 am-1 pm
Mon.-Wed. 7 am-3 pm
Thurs. & Fri. 7 am-8 pm
Sat. 7 am-3 pm

**95 Elm St. East •
Hwy. 55, Annandale
274-1404**

Broasted Chicken – Our Specialty

Monday

1/2 Commercial & Garden Salad

Tuesday

Unlimited Spaghetti

Wednesday

Broasted Chicken Buffet

Thursday & Friday

Pork Chops

Pick 2:

\$6.95 - Soup & Garden Salad

Or Slice of Pie

Weekly Specialties

Check Facebook for our weekly soup, salad, sandwich, burger, or dessert!



Happy Hour Monday - Friday 4-6pm
Every Friday 2 for 1's 5-6pm

MONDAY - POUNDERS \$3 TILL CLOSE
 TUESDAY - WINGS \$0.70 (DINE IN ONLY)
 WEDNESDAY - BINGO 6:30PM
 THURSDAY - BEER AND PIZZA NIGHT
 FRIDAY - HORSE RACING 6PM
 SATURDAY - CHARITABLE MEAT RAFFLE 5:30PM
 SUNDAY - \$4 BLOODY MARY'S ALL DAY

Stadium Bar and Grill
 45 Chestnut St. W
 Annandale MN 55302
 320-274-6646

PULLTABS & ETABS AVAILABLE

BINGO
 WEDNESDAYS AT 6:30PM

License # 02921-008

O'BROTHERS
 Wine & Spirits

NEW HOURS:

- Mon.-Thurs.-9 am-10 pm;
- Fri. & Sat.-8 am-10 pm
- Sun.-11 am-6 pm

Annandale Store
 700 Norway Dr.,
 Annandale

Clear Lake Store
 7890 Front St.,
 Clear Lake

Montrose Store
 125 Nelson Blvd.,
 Montrose

CELEBRATING OUR 1-YEAR ANNIVERSARY!

COME SEE US BEFORE YOU HIT THE LAKE!

FRENCH LAKE LIQUOR

Sign up & earn points with our CUSTOMER REWARDS PROGRAM

OPEN
 M-Th. 10am-9pm
 Fri. & Sat. 10am-10pm

14555 County Rd. 37 NW, Suite 3, Annandale

QUALITY FRESH STEAKS & CHOPS
 www.knaussausagehouse.com

Homemade Assorted Brats, Sticks, Jerky **AND** All the Fish you couldn't catch!

NEW
5 LB. TAKE & BAKE FAMILY MEALS

31 Main St., Kimball
320-398-5485

Celebrate Summer!
Order today!

DQ

ORDER IN OUR APP OR ONLINE AT:
www.dairyqueen.com

OPEN DAILY!
Hwy. 55, Annandale • (320) 274-3479

Fan Food
 not fast food™

SPILLED GRAIN BREWHOUSE

Taproom Hours
 Thurs 4-9pm
 Fri 3-10pm
 Sat 11am-10pm
 Sun noon-6pm

Second Sunday Concert Series
May - Sept

Craft Beer
Live Music
Off-Sale

Food Trucks
Craft Root Beer
Patio Fire Table

Spilled Grain Brewhouse, 300 Elm St E, Annandale, MN
 spilledgrainbrewhouse.com
 320-274-1129

CRUISE ON IN

For four Friday nights this summer you can head on downtown Annandale, and you will be greeted by some heavy-hitting collectible vehicles.

Go to the area of City Hall Square and the Clock Tower Park, and you will see a line of cars that stretches a couple of blocks.

While EVs (Electric Vehicles) power some present and may power all future vehicles, you won't find those here.

Instead, you'll find various renditions of the internal combustion engine atop chassis and inside vehicle bodies of all shapes – throwbacks to the past.

On Friday nights June 14, July 12, Aug. 9, and Sept. 13 from 8 to 5 p.m. you'll find almost any type of motor vehicle. The cruise ins are held the second Friday of the month.

This is the third season for the cruise ins, and of course more vehicles are always welcome.

Organizers encourage bringing a foodshelf item. The event is sponsored by the Annandale Area Chamber of Commerce.



PARAMOUNT CENTER FOR THE ARTS

AMAZING MUSIC LINE UP THIS SUMMER!



THE KINGSTON TRIO

50s & 60s American Folk

Jun 12 • 7:30PM & Jun 13 • 1:30PM



VINTAGE VEGAS

Songs of Sinatra, Bennett, Garland, Martin & More

Jun 25 • 1:30PM



JUSTIN PLOOF & THE THROWBACKS:

Music of the Beach Boys - July 11 • 1:30 pm



SUPER DUOS

Greatest Vocal Duos

Jul 18 • 1:30PM



TAKE ME HOME

Music of John Denver Starring Jim Curry

Aug 13 • 1:30PM

DOWNTOWN ST. CLOUD | 320.259.5463 | PARAMOUNTARTS.ORG





**SUMMERTIME IS THE BEST TIME
TO SAVOR THE FLAVORS OF LU'S!**

Stop in to Lu's Cafe for Breakfast & Lunch

Lu's CAFE & CATERING

Downtown Annandale
Open daily • 320-274-5034



**GRAB SOME LUNCH HERE,
ENJOY ON THE LAKE.**

SUBWAY

Hwy. 55, Annandale • 320.274.7100
www.subway.com

ORDER ON
OUR APP!



WE CATER!

Birthdays • Anniversaries • Reunions
• Graduation Parties • And More!

**Rendezvous
Bar & Grill**
Where Friends Gather

- Dine-In & Takeout
- Bean Bags
- Pull Tabs
- Saturday Night Live Music
- Pool & Darts

Open Daily
11 am–2 pm

OFFSALE LIQUOR STORE

320-261-5167 • 35 Oak Ave. S., Annandale



JOIN OUR TEAM

**Delicious
Food
for People
on the Go!**



EAS

E.A. SWEEN COMPANY
www.easween.com

Like us on
Facebook

 **Maple Lake** 
WINE & SPIRITS

LARGE VARIETY OF WINE & CRAFT BEER SELECTIONS!
WE ARE HERE FOR YOUR PARTY NEEDS!

Senior Citizen Monday's
 10% off total purchase (60+ years of age.)

Join Our Wine Club Today!

901 State Highway 55 E, Maple Lake (Next to Cenex)
 Mon.-Thurs. 9am-9pm; Fri.-Sat. 9am-10pm; Sun. 11am-4pm

 **Join Our Lucky Irish Rewards Program**

Keeps Available!
320-963-3715

www.ci.maple-lake.mn.us/winespirits

 **BURGER SPECIAL**
 Buy One, Get One
1/2 OFF!*

*of equal or lesser value. Dine-in only.
 Exp. 9-29-2024



430 OAK AVE S., SOUTH HAVEN • (320) 236-5151

DASSEL LIQUORS

COMPLETE SELECTION OF
Wine • Beer • Liquor

Mondays
10% OFF ALL Beer

Tuesdays
Senior Citizen Day 10% OFF

Wednesdays
10% OFF ALL Wines

WEEKLY SPECIALS

800 Parker Ave. W, (Hwy 12) Dassel, MN
 320-275-4435
 Open: 9am-9pm M-Th; 9am-10pm Fri-Sat;
 11am-4pm Sun.
 Please be responsible-
 don't drink and drive







FOOD FUN & DRINKS

NELSON BROS.
 Restaurant • Pub • Bakery



1-94 Exit 178 Clearwater, MN
clearwatertravelplaza.com
 320-558-2261

MARKET FRESH

On Saturday, June 15, the Annandale Farmers Market will launch its 17th season in the parking lot in front of Annandale City Hall.

The market will be open from 8 a.m. to noon every Saturday until Sept. 28.

Volunteers run the Annandale Farmers Market as part of the Discover Downtown Committee through the Annandale Area Community Team.

The City of Annandale plays a key role as well.

Tom Rand is the new manager of the market.

Favorite vendors return

The following vendors will be returning to this year's market:

■ Untiedt's Vegetable Farms will sell a wide assortment of produce grown in Waverly.

■ Olson Family Farm's Shelly and Chris will provide maple syrup, honey, granola, pet treats, barbecue sauce,



SHOP BIG - SHOP SMALL BUFFALO HAS IT ALL!

**OVER 30 INDEPENDENTLY OWNED
SHOPS & RESTAURANTS**

Furniture, Home Décor, Antiques, Apparel, Kitchenware, Music/Vinyl,
Bath/Body, Gifts, Make & Take – and the list goes on.

Never been? – Best check it out.

Been here before?
Come See **ALL** the new shops.

Did we mention...
great eateries, winery and ice cream?



763-682-4902 | BuffaloChamber.org



Find us on facebook.com/shopbuffaloMN



CUSTOM TOWING, LLC

CALL 612-280-2019

24 Hour

- ✓ Towing
- ✓ Hauling
- ✓ Recovery
- ✓ Lockouts
- ✓ Jump starts



**We Haul
Larger Vehicles!**

We buy junk cars • We do lawn care, mowing, fertilizing, clean-up, and snowplowing.

freeze dried treats and more. They often have new inventory, so check them out every week.

■ Lazy Toad Farm with Joe Rand will be at the market weekly, offering honey, flowers, perennials, succulents, canned goods, produce and more.

■ Weaving by Linda with Garry and Linda Elfstrand will be at the market once a month to offer loomed rugs, hand embroidered dish towels, canned goods, woodworking items and key rings.

■ Frisky Rooster with Terry and Beth Alison Berggren will return this year to sell their Bloody Merry mix, salsa, barbecue sauce, pickles, taco sauce, seasoning mix, nut mix and spaghetti sauce.

■ The Danish Baker with Rasmus Bregendahl will be on-site every week, offering Papa Tom's sticky buns, buttermilk cinnamon rolls, Danish rye bread, doughnuts, gluten-free Brazilian cheese bread, chocolate chip cookies, and sour-dough bread.

■ Made by Jane with Jane Schmidt will offer photo cards, biscotti, and homemade sewing projects.

■ Robin Hoeft will sell a variety of macarons, mini macarons, stuffed cookies, "cakesicles," and other baked goods

■ The Annandale Friends of the Library will be on-site once a month to hold their ongoing book sale.

■ Karen Polaschek will carry a variety of homegrown canned pickles, salsa, jams and jellies.

■ Three Farm Dogs with Virginia Marohn will sell flowers, honey, soap, candles, jelly, breads and lotion.

■ Hope and Healing will be at the market offering

handcrafted soap, bath bombs, stardust, face lotion, angel ice, beard butter, lip balm, natural deodorant, laundry soap, sachets, and shampoo bars.

■ Annandale Art and Textile Center (AATC) will join the market with weaving demonstrations and locally made fiber products. AATC is a non-profit vocational weaving program for people with various learning styles and abilities.

■ Black Lake Farm with Lindsey and Marcus Syverson every other week will offer produce and baked goods, including purple peppers, dragon bush beans, English muffins and much more.

New vendors

New vendors to the market this year include:

■ Crumb and Kettle will carry sourdough breads and baked items and reusable paper towels.

■ Caouette Creations will carry toffee, caramels, cake pops, chocolate covered espresso, dipped Oreos and pretzels.

■ Woven Oak Kids Community will carry produce, plants, salves and homemade items from children

■ Simple Cider Company will carry sparkling apple juice and apple juice.

■ Prime Avenue Farm will carry lamb, garlic, garlic scapes, micro greens, broccolini, fresh herbs, cantaloupe, winter squash, cucumbers, tomatoes, head lettuce and more.

■ Health Heritage Farm will offer produce, sauerkraut, herbs, bedding plants, baked goods, pickles, eggs, micro-greens and fermented and pickled foods.

■ Vantage Point Woodwork will carry Woodwork, leathercraft, art, decor, gaming supplies and nerdy gifts.



**DASSEL HISTORY CENTER
AND ERGOT MUSEUM**
National Register of Historic Places

Permanent Exhibits –
Ergot • Seed Corn • Magnus Johnson

Changing Exhibits –
History • Art

Programs • Events

Check the website

Hours: Tuesday-Friday 10 a.m. – 4 p.m. • Saturday, 9 a.m. – 1 p.m.



901 First St. N.,
Dassel, MN 55325
320.275.3077
dahs@dassel.com
www.dasselhistorycenter.org

*We believe in hope,
We believe in love,
We believe in family.*



**Dingmann
Funeral Care**
Burial & Cremation Services



320-274-8811
www.dingmannfuneral.com

LAND O'LAKES OIL & PROPANE

Small town friendly service!



• Propane • Diesel • Fuel • Kerosene • Motor Oil
• Gasoline • Tank Truck • Transport • Tires

Family-owned and operated since 1929

121 Main Street South • Kimball
320-398-5455 • www.landolakesoil.com

Power of Produce

The popular Power of Produce or PoP program will again be offered this year. The PoP program, which benefits families and local farmers, will start on June 22, the second week of the market. PoP focuses on improving childhood nutrition, empowering kids to make healthy food choices and connecting children to healthy local food.

This program is supported by local businesses, healthcare providers, fraternal organizations and individuals.

Entertainment

Market management is busy booking musicians for the market this year and will host musicians on-site at least every other week.



A.M. MAUS & SON

SMALL Town - BIG Value, Since 1928

320.398.3210 • 800.510.2732 • 320.398.3212 fax

PO Box 130 • 21 Maus Drive • Kimball, MN 55353



www.ammaus.net

SurelookHomeWatch.com

612-325-6614



SureLook Home Watch

Our Eyes - Your Peace of Mind

Providing personalized, weekly home visits to unoccupied homes for snowbirds and seasonal homeowners, looking for water issues, storm damage, heating problems and more.



Kimball Garage LLC

Tim Ellis, Owner

- Auto Repair • Tires
- Alignments • Oil Changes
- Interstate Batteries

Hours: Mon.-Fri.: 7:30-5:00
320-398-2200

PartsCity Kimball Parts City

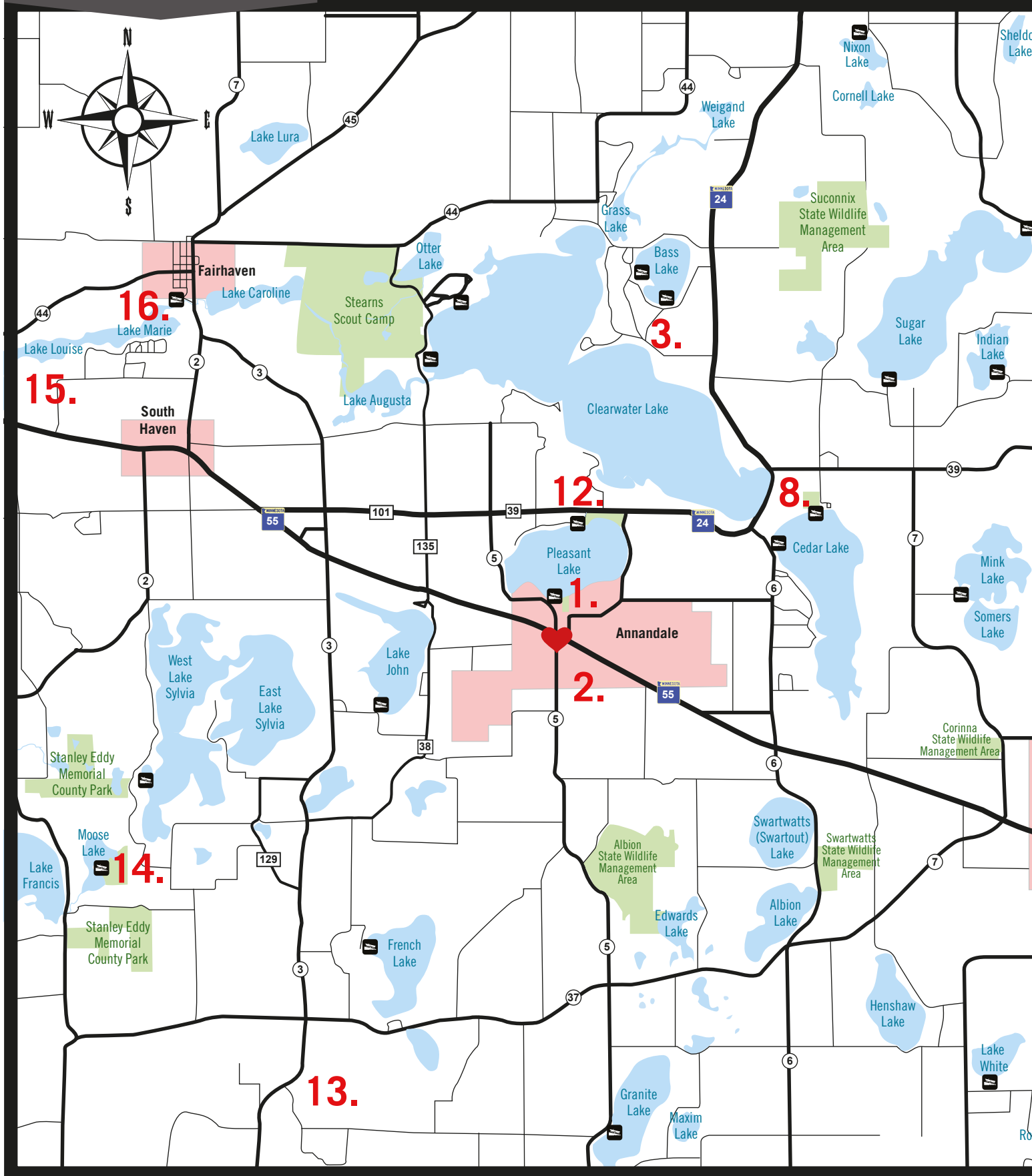
AUTO PARTS Hwy.15 & 55, Kimball

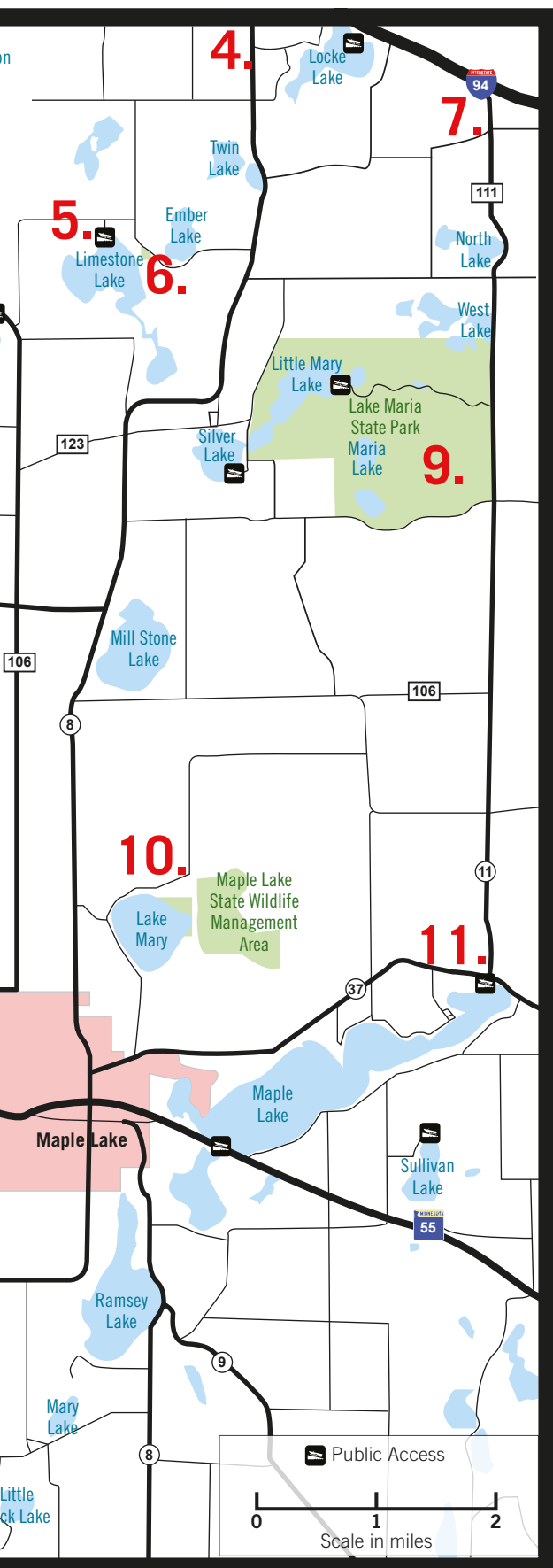
We have servicing parts for Automotive, Ag & Fleet

Huge Inventory - Low Prices - Quality Parts

35 Maus Dr., Kimball, MN
HOURS: M-F 7:30-6, Sat. 8:30-3 • 320-398-2850

AREA MAP





1. Municipal Park - picnic area, pavilion, softball field, beach, fishing pier, public access
2. Minnesota Pioneer Park
3. 1872 Saint Mark's Episcopal Chapel in the Woods
4. Marcus ZumBrunnen County Park – hiking trail
5. Limestone Lake County Access - picnic area, fishing pier, public access
6. Stirewalt Memorial County Park – beach
7. Harry Larson County Forest – picnic area, hiking trail, ski trail
8. Schroeder County Park – picnic area, campground, beach, fishing pier, public access
9. Lake Maria State Park – picnic area, campground, hiking trails, ski trails
10. Ney Memorial County Park – nature center, hiking trails, ski trails
11. Maple Lake County Access – picnic area, fishing pier, public access
12. Clearwater Pleasant County Park – picnic area, beach, disc golf, dog park, fishing pier, public access
13. Carl Johnson County Forest – picnic area, hiking trail, ski trail
14. Stanley Eddy County Park – picnic area, hiking trails, ski trails
15. Lake Louisa County Park – nature park
16. Fair Haven Dam County Wayside – picnic area, fishing pier, historical marker

Find it all at **SWAP CENTRAL**



The Wright County Swappers Meet is a summer tradition, now in its 54th year. Folks come out for the great bargains, good food as well as spending time with family and friends in the beautiful outdoors of Minnesota. **April to October**

The Swappers Meet opens in April and runs through the end of October. Hours are a half hour before sunrise to 1 p.m., depending on the weather.

Holiday weekends are a three-day event open Friday, Saturday and Sunday. This year the Swappers Meet will be open for Memorial Day weekend: May 24, 25 and 26; Fourth of July weekend: July 5, 6 and 7; and Labor Day weekend Aug. 20, 31 and Sept. 1.

“We don’t close the gates due to rain as some vendors with canopies will continue to sell even if the weather isn’t ideal,” Miller said. “In the event of heavy rain, most vendors do pack up to protect their merchandise.”

Visitor admission and parking is free. The meet is located at 13594 100th Street NW, South Haven.

For more information, the website is wrightcountyswappersmeet.com and they can be found on Facebook or call 320-274-9005.

Vision of Stanley Miller

It started as the vision of Stanley Miller, who opened the first Swappers Meet on April 4, 1970, with about five vendors and a dozen curious shoppers.

After he passed away in 1982, Stanley’s wife Gladys took





over the business. In 2013, Gladys' son Kevin and his wife Laurie assumed the responsibility to make sure the family tradition is carried on.

More than 200 vendors, 50 acres

Professional vendors are drawn to the Swappers Meet because of the large crowds, with some coming from as far away as Missouri and Texas, while other vendors flood in from around the upper Midwest each week. Still, there is generally plenty of room on 50-plus acres of land for local sellers as well.

The Wright County Swappers Meet has grown into the largest seasonal outdoor market in Minnesota. According to Miller, an average week attracts 200 vendors showing off their wares from sun-up until early afternoon. On holiday weekends, the event swells to accommodate up to 300 to 350 vendors and more visitors than can be counted.

"It's a family-run farmers market, art fair, garden center, antique mall, sporting goods store, and garage sale near South Haven," Laurie said.

The Swappers Meet offers both new and used items. Most weekends you will find antiques, clothing, sporting goods, tools, music CDs and vinyl, video games, jewelry, collectibles, home goods, artwork, produce, flowers, trees, toys, books, pets and more.



"Vendors vary from week to week, so the merchandise for sale is always changing," Miller said. "I would advise shoppers to arrive by 9 a.m. for the best deals."

Food and more

- Food is available from several vendors selling cold drinks, hot beverages, candy and treats.
- There are flush toilets and porta-potties on site.
- There is free parking, including handicapped parking.
- An ATM is on site.

Living History **PIONEER PARADISE**

One of the Annandale area's cultural gems is Minnesota Pioneer Park, which celebrated its 50th anniversary in 2022. The park has been an attraction for five decades, from musical interests to historical artifacts, buildings, and re-enactors. It remains a refuge where the people and places of the past live on.

Its dedicated volunteers and detailed exhibits illustrate what life was like in years gone by and help thousands of visitors each year understand how the present has been shaped.

The park, which includes a recreated turn-of-the-20th century main street, began when the abandoned Soo Line train depot was put on wheels and towed down Highway 55 to the east side of Annandale.

Along with Blaine Barkley, the late Nobel Shadduck saved the depot from becoming just another dress shop or antique store and made it into the museum's first historical display. The park's 26 acres, which once belonged to the Ridgway family, are home to more than 20 exhibit buildings, including the original Ridgway homestead's log cabin and house from the 1800s.

Since 1972

The museum opened as the Minnesota Travel Park in 1972, but it quickly evolved into a place to preserve the area's pioneer heritage and was renamed Minnesota Pioneer Park.

In 2011 the park's board of directors approved adding "An Open-Air Historical Museum" to all park literature to reflect its mission and role as an area educational and tourist attraction.

Caboose, schoolhouse, church

Now people come from all over to visit attractions like the authentic 1886 Soo Line caboose, the one-room schoolhouse dating back to 1902, and the 1886 Finnish Apostolic Church, which has ties to the Titanic tragedy. The minister and his



wife were two of the lost passengers at sea.

Visitors can hike through a piece of the countryside once called the "Big Woods" by pioneer settlers and view an assortment of native plant life. Near the railroad, visitors can stroll down the main street and stop at recreations of a general store, dentist's office, funeral parlor, blacksmith's shop and other buildings. The park also features the original Corinna Township Hall.

In the fall of 2017, a town fire hall was constructed.

Big Woods building

At the center of the park is the Big Woods building. Inside, visitors can see exhibits featuring area veterans and military history, Native American artifacts and clothing, photographs of the Annandale community and more.

The Big Woods building also features the Gordon Memorial Library, which opened in the fall of 2015 and contained several hundred books that either date from or feature the mid-1800s through World War II. Some examples include an Annandale High School yearbook from 1910; an Encyclopedia Britannica set from 1893 formerly owned by Annandale settler John Buri, and a large set of leather-bound classic novels.

Student visits

Minnesota Pioneer Park hosts hundreds of students each

year from as far away as the Twin Cities for a day-long guided tour that includes hands-on activities.

Over the years, the park has welcomed more than 50,000 students, with many schools making return visits.

Summer calendar

Spring and summer events at the park this year include:

- WW II Re-enactment and Rendez-vous Encampment, Saturday and Sunday, May 18 and 19.
- Spring Maple Syrup Pancake Breakfast – Sunday, May 19
- Pickers Fest and Antique Tractor Show – Saturday, June 8
- Pioneer church service – Sunday, June 30
- Fall Festival and pork chop feed, Saturday, Sept. 21
- Fall Pancake Breakfast – Sunday, Oct. 6.
- Halloween Spooktacular, Saturday, Oct. 26

Event details are subject to change.

Check the website pioneerpark.org for more information.

Visit the park

The park is located on Annandale's east side on Highway 55 and is usually open from Memorial Day to mid-October. Office hours are Monday, Tuesday and Thursday, 10 a.m. to 2 p.m. The park is staffed by volunteers during weekends.

Call the office during the week for weekend availability. There is an admission fee. Check their website for more information at www.pioneerpark.org or call 320-274-8489.

A salute to a new era

As the hearty hard-working immigrant settlers pursued



their dreams, wheels of progress were turning. Work horses were being replaced by “iron horses” and the era of tractors and farm equipment was dawning. By the middle of the 1900s farming was becoming an easier form of prospering.

Pioneer Park likes to convey this new era to the community and all visitors young and old. In the summer they have an antique tractor show planned for Saturday, June 8. During the event, weather permitting, the fields will be plowed, disced, planted and harvested using old equipment stored here or loaned by members. Area tractor clubs bring their old machinery and it's fun to see them work.



PLENTY OF GREAT FOOD OPTIONS

By Kris Potter

I love to cook, but sometimes it's just a great day to sit at a table and let someone else do the cooking and clean up. In the Annandale Lakes area we are lucky to have restaurant options in Annandale itself and in the larger and smaller towns nearby.

Being a St. Cloud girl, and a second generation quarry swimmer, I have a few favorites in the cloud. Bravo Burritos 68 33rd Ave. South, St. Cloud, has been whipping up its giant sized and tasty burritos since I taught in nearby Sartell. I've even heard via the grapevine they are being featured on America's Best Restaurants.

Bo Diddley's with outposts in St. Cloud and St. Joseph serve up a great sub, and if you like contemporary folk music are the hosts for some of Granite City Folk Society events. Granite City Folk Society brings in artists from the region and also international groups playing the best in singer songwriter, Americana and Roots music.

Their primary performance spaces are First Presbyterian Church in St. Cloud and Bo Diddley's Pub and Deli at 129 25th Ave. S., St. Cloud. Check out future concert info at www.granitecityfolk.org an added benefit cheap tickets and easy parking.

Closer to home

Locally, I also kept hearing last fall about "the bistro."

It took some sleuthing, but we finally located it inside Pleasant Vista Senior Living at 700 Park St. E. Annandale. There are so many things to like about it, quiet interior seating, original and thoughtfully prepared dishes and on a sunny summer day outside seating that looks over a marsh and Pleasant lake in the distance.

We are great fans of Jimmy's Pizza, although it takes us months and years to cash in on the free cheesy sticks you get if you save the side of your pizza box. Their sauce is tasty but not too spicy!



Even closer to us, South Haven has the lovely Agave restaurant with outdoor seating and generous portions, great for takeout if you have a crowd at the lake and don't want to leave the dock to head to a restaurant.

Traveling down 55 we often meet up with friends at the Forget Me Not Cafe at 22 Division St. E Unit B in downtown Buffalo good diner food, updated and fun! Keep strolling and you can spend a rainy day at Buffalo Books and Coffee just down the street.

For our second cup of coffee of the day we of course support our local Annandale coffee shop In Hot Water often followed by a stop at the library or other local shops.

If we're on the road, there's Spooky Brew at 120 Oak Ave. N in Maple Lake and in Kimball Rise and Grind, 620 Hazel Ave. E, which also serves up great subs which we have gotten to go all neatly wrapped and ready for the boat, car trip or picnic.

So keep it fun this summer and take some time to check out these and our other local eateries and establishments. Shop and eat local!

On my future food wish list is a local bakery so we don't have to zip in to St. Cloud to Backwards Bread, 3360 Southway Drive, for their frozen pizza all rolled out and ready to top with your favorite toppings or their croissants or their interesting bread selections.

Kris Potter and her husband Mike have had a cabin on Lake Sylvia for many years, which they rebuilt recently and made it into their permanent home.



KRAEMER TRUCKING & EXCAVATING INC.
GOLD SPRING, MN

LOOK TO US FOR ALL YOUR AGGREGATE NEEDS






NOW SERVING YOUR AREA!

For pick up or delivery call:
Office: 320-685-3024
Onsite: 320-292-6767

Convenient Pit Locations
14650 Co. Rd. 75, Monticello
16061 Co. Rd. 45, South Haven



"We want you to enjoy the outdoors!"

- ◆ Licensed Mosquito & Tick Control
- ◆ Lake Weed Removal & Aquatics
- ◆ Spring & Fall Clean-ups
- ◆ Lawn & Landscape Maintenance

Annandale Lakes Area Family Owned

 763-204-4300 Office@lakeslandscapingmn.com



FOR THE WEEKEND • FOR THE SEASON • FOR A LIFETIME
The Heart of the Lakes Welcomes You



The Annandale Area Offers:

- Excellent School System
- Vibrant Business Community
- Residential and Commercial Development Opportunities
- 26 Area Lakes in 10 mile radius
- Historic Minnesota Pioneer Park
- Historic 4th of July Celebration

Summer Events

- ♥ **All-City-Garage Sale**
Saturday, May 4
- ♥ **Chili Cookoff**
Saturday, May 25
- ♥ **Heart of the Lakes Open Golf Tournament**
Friday, June 7
- ♥ **Friday Night Concerts in the Park**
- ♥ **Farmers Market**
Saturday mornings, Annandale City Square beginning June 15
- ♥ **Heart of the Lakes Cruise-Ins**
Four Fridays throughout the summer
- ♥ **Fourth of July**
Wed.– Sun., July 3–7




Annandale Area Chamber of Commerce

P.O. Box 417, Annandale, MN 55302

info@annandalechamber.org

www.annandalechamber.org

 [@AnnandaleAreaChamberofCommerce](https://www.facebook.com/AnnandaleAreaChamberofCommerce)

City of Annandale

30 Cedar St. E, Annandale, MN 55302

320-274-3055

www.annandale.mn.us

 [@CityofAnnandaleMN](https://www.facebook.com/CityofAnnandaleMN)



— Explore — **LAKE LIFE**

Breathtaking natural beauty is a year-round benefit of living in the Heart of the Lakes. The drab browns and grays of early spring soften and warm into the dark greens, deep blues and brilliant colors of summer. The lakes shed their icy blankets and welcome swimmers, boaters and waterfowl back into their welcoming waves, and abundant life is evident on all sides.

Brilliant sunrises and sunsets accentuate the allure of the lakes, and the call of loons lends a northern Minnesota-style soundtrack to the evenings. With such peaceful surroundings, it's no wonder that the lakes have made Annandale a destination from its earliest days.

A culture of seasonal lake residents has developed alongside and in cooperation with the services and residents in town. Over time, many multi-generational lake homes have become permanent residences for the "lake people," adding year-round vibrancy to life in Annandale.

With 26 lakes in a 10-mile radius, Annandale is a hub of fishing activity during the warm season. There are regional attractions in large, beautiful bodies of water like Clearwater and Sylvia. Many boaters make a day of it in the area, moving from lake to lake as they wish.

Outside of fishing, area residents also have an abundance of lakeside parks and beaches to enjoy, as Annandale Municipal Park is located in town, and county parks like Clearwater-Pleasant on the north side of Pleasant Lake and Schroeder Park on Cedar Lake are just a short drive or bike ride away. These places are popular for families with children, as each park offers a quality playground as well as large swimming areas and beaches. There are also picnic shelters and recreational options like ball fields, volleyball courts and walking or biking paths.

Go forth and live life on the lakes to the fullest.

Wet a line CATCH A FISH

By Jerry Carlson

Here are some basic presentations that can be used to catch the most popular fish species in the Annandale area.

■ Crappies are one of America's favorite fish and can be caught year round on many lakes. In order to consistently catch crappies, there are some basic rules to follow.

First of all, use light line. I prefer four-pound-test Trilene, but you can get by with six. Light line is crucial for catching crappies.

For bait, I use small 1/64 or 1/32 ounce jigs. In the spring I fish the jigs plain but later in the year I will tip them with a minnow. Chartreuse, white, yellow, or black can all work depending on the day. My favorite jigs, however, are a pink and white feathered jig or a plastic Northland Slug Bug.

A sliding bobber rig will allow you to fish in two feet of water or in 20 feet. Sensitive floats are ideal for detecting light biting crappies in the cold water of spring or when the fish are feeling finicky. Crappies are attracted to weeds and cabbage beds. They often bite best in the early morning and late evenings.

■ Sunfish are frequently found in the same location as crappies but are more consistent biters. Sunnies can also be caught on jigs but long shank hooks tipped with live bait are often preferred to make hook removal easier.

Sunnies are cooperative biters when small, but get fussier with age and size. Big sunnies are often caught in deep water by walleye anglers trolling live bait rigs tipped with leeches and crawlers. Sunnies love to hide in weeds or seek cover under boat docks and diving platforms.

■ Northern are toothy critters with razor sharp teeth that can cut heavy line with ease. They are also aggressive feeders that provide thrills and excitement all summer long.

They can be taken on many artificial lures such as Flicker Shads and Mimic Minnows. Various spoons and spinner-baits fished around weed edges and drop-offs

will also work. Northern have

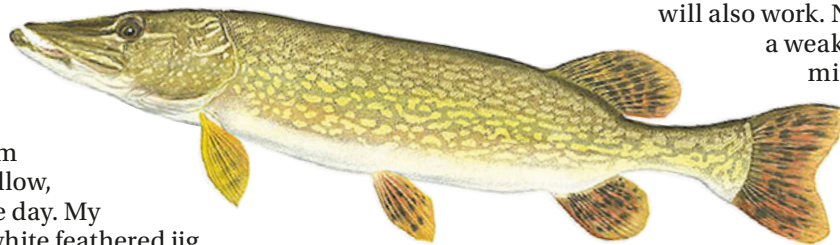
a weakness for sucker minnows. A four to

six inch sucker minnow dangled on a bobber off of a deep break or a weed

bed is almost

sure to get some attention. A heavy nylon leader will work better than steel.

Sucker minnows can also be trolled effectively for northern. Use chartreuse or orange floating jig heads with a three-eighths or half ounce slip sinker. Troll this rig at the deep



A1 MARINE

Highway 55 West, Annandale, MN 55302 • 320-274-8227

*"Don't go to
the lake
without us!"*

**FUN ON THE LAKE BEGINS HERE
WITH A DIVERSE LINE OF PRODUCTS & SERVICES.**

SALES

- Pontoons
- Docks
- Lifts
- Used Boats & Motors
- Dock Tires
- Pontoon Trailer Rentals
- Full Line of Parts & Accessories

SERVICE

- Dock & Lift Installation
- Repair Boats, Motors
- Shrink Wrap
- Trained Techs
- Winterizing by Full Factory
- Maintenance
- Indoor & Outdoor Storage
- 1 Hour Winterizing



South Bay
SUNSHINE for a lifetime

YAMAHA

BRANDS • SERVICE

WWW.A1MARINEINC.COM

MERCURY
1 On The Water

HEWITT
MORE A BODAY

MONSTER
TOWER
LAKESIDE SERVICE & SUPPLY

weed line, around points, weed beds, and sunken islands. Live bait trolling with sucker minnows will net you numerous bass as well.

■ Bass are one of the most sought after fish found in the Annandale area and are also one of the most plentiful. Bass are popular because, like northern, they are found in many locations and are often aggressive feeders.

Artificial lures work well for bass. In my opinion plastic worms are probably the best all around bass lure ever invented. I prefer to use a six-inch Berkley PowerBait fished on 1/8-ounce jig or a seven inch worm fished with a more weedless Texas rig. Sinking worms hooked wacky style can be exceptional early in the year.

The plastic worm may not look like much, but it is a real killer when it comes to bass. It can be fished both deep and shallow but works best when fished with slow hops right on the bottom. The toughest part about fishing a plastic worm may be detecting the light bites.

Spinnerbaits and crankbaits are two other lure types that also work well for bass. When it comes to spinnerbaits, I really like to use a 3/8-ounce single spin in either white or chartreuse.

■ Without a doubt, there is something special about catching walleyes. Maybe it is because they are such good table fare or maybe it is the fact they are a little trickier to catch than other species of fish. Whatever the reason, walleyes are a prominent fish in the eyes of the angler.

Walleyes are found in many Annandale area lakes. Although the walleye can sometimes try one's patience, there are many impressive catches made locally each year.

Live bait rigs are an effective way to fish for walleyes. I usually start by trolling live bait rigs but once active fish are found, jigging or slip bobbers may be more effective. Minnows, especially shiner minnows, work well for rigging and tipping jigs early in the year but give way to leeches and crawlers after the first few weeks of the season.

I believe that too many anglers ignore crankbaits for walleyes. It wasn't that many years ago that Shad Raps were the hottest thing going for walleyes.

Trolling is a good way to search for active walleyes. Deep water weed lines, rock piles, and sunken islands are popular hangouts and should be worked thoroughly. If a likely looking spot is found, don't be afraid to include the surrounding deep water in your search.

Local bait stores can save you hours of time if you ask for advice on where, when, and how deep.

Walleyes are notorious low light feeders. Many anglers prefer to fish for them early or late in the day. Night fishing will also work. Using light line will add a few percentage points in your favor.

Whatever you fish for, be versatile! Don't just sit in one spot all day. Try different methods and lures. Fish for another species of fish if the one you are after is not cooperating. You may want to try another area lake to see if fish are more active there.

Jerry Carlson of St. Augusta is the author of "Details for Catching Fish." He has fished the area's lakes for many years, and he is an avid hunter. He is an occasional contributor to the Advocate and Messenger.

CLEARWATER
PartsCity
AUTO PARTS
HARDWAREHANK

320-558-9901
845 Highway 24
Clearwater

Locally Owned
and
Operated

20th
ANNIVERSARY

Summer Hours
M-F 7:30-8:00
Sat 8:00-6:00
Sun 10:00-3:00

Services We Offer

- Live Bait
- MN DNR Licenses
- Key/Fob Cutting & Programming
- Hydraulic Hose Assemblies
- Specialty Tool Loaner Program
- Diagnostic Code Reading

INTERSTATE BATTERIES
McGOWAN
WIX
AMSOIL

Better Parts, Better Prices, Better Service

**Bobcat**

WE HAVE AN
ATTACHMENT
FOR THAT.



FARM-RITE
EQUIPMENT INC

Sales • Service • Rentals • Parts

Farm-Rite Equipment is a full service, authorized Bobcat dealer, providing customers with Sales, Service, Parts & Rentals on all new & used Bobcat equipment.

Dassel: 888-679-4857 • Long Prairie: 866-514-0982
Willmar: 877-484-3211 • St. Cloud: 844-262-2281

www.farmriteequip.com

THE SECRET SAUNA CITY



By Kris Potter

Our long settled lake, with original cabins to the modern lake home, harbors a long held secret...sauna society. Our urban neighbors to the south are only now discovering what cabin owners have known forever, sauna is an essential aspect of Minnesota life.

Recent boat or kick sled tours around our lake reveal this city. Tiny structures, some floating, some modern, some that used to be tool sheds, some shared by adjoining neighbors, some that met tragic fiery ends, and others craftily designed by local home designers, dot the shoreline and hills around the lake.

My first sauna, offered by local authentic Finn's, was a shock and not totally pleasant. I remember tucking in to the small lake side structure, finding it hard to breathe the thick steamy air, and then happily running the twenty feet under their willow tree and leaping into the water. I was hooked. Many days spent traipsing down to their house for sauna, grilled pork chops, a few gin and tonics, and then robust conversation with one family being firmly republican and the other definitely democratic. Civil conversation likely mellowed by heat!

Personally, I'm not a summer sauna person, who wants heat on heat? To me a sauna really shines in the spring, fall and winter. We chuckle that we are warmly enjoying our own beach without having to hop on an airplane to some distant scorching sands. The sauna extends and enhances the lake life, and kept our adult kids busy all day on a fall day the week before ice in. The screams of delight and laughter as they went back and forth between almost frozen water and heated sauna will be a lifetime memory for me.

I've gone in to the water in winter from a sauna in the boundary waters, but I was younger then. We've tried rolling in new snow after sauna which I don't recommend, but think standing in a cool fall or spring rain on one of your sauna breaks is to be recommended.

WiFi is guaranteed not to work in the sauna and your phone would likely never be the same if you brought it in to a sauna, another strong advantage of taking a sauna! Early sauna-ers talk

about the days when if you smelled smoke from a neighbor's sauna, you could just show up and join the heated inhabitants. Contrast that with today's urban sauna experience where you reserve your time, pay for your seat and have to plan the whole experience. Though I have to say, I'm glad the city is trying to slow down and mellow out, it might calm the drivers on city highways and by ways!

So I guess the secret's out, we have a sauna city here in central Minnesota and are way ahead of our urban counterparts who are trucking portable saunas into parking lots, backyards and lakeside parks. I say welcome to the club, don't forget to hydrate, and if you are leaping into almost frozen water beware of ice forming on the shore line path when you come out of the lake dripping wet!

Kris Potter and her husband Mike have had a cabin on Lake Sylvia for many years, which they rebuilt recently and made it into their permanent home.



CRAVING PIZZA?

We've got you covered!



**MENTION THE SUMMER GUIDE
TO SAVE \$1 ON PIZZA!**

Gas • Bait • Tackle • Supplies

South Haven Sports

320-236-7613 • Hwy. 55, South Haven

24 HOUR PAY AT THE PUMP

OPEN 7 DAYS/WK



Area LAKES

The Heart of the Lakes area has an abundance of lakes, rivers and streams with fishing opportunities.

Most of the lakes in Wright and Stearns counties are managed by the Minnesota Department of Natural Resources Area Fisheries office in Montrose.

Public water access maps are available from the Section of Trails and Waterways, and are helpful guides to the state owned public access sites. Also, visit any local bait shop for maps or the DNR's website, www.mndnr.gov/fishmn.

AUGUSTA

180 acres. Public access via Clearwater Lake. Resort. Good northerns, panfish, walleye.

BASS

213 acres. Public access on the west side. Crappies, largemouth bass, northerns and panfish.

CAMP (HENRY)

108 acres. Public access on the north end. Panfish, northerns and bass.

CEDAR

837 acres. Public access from Co. Rd. 6. Over 100 feet deep. County park (Schroeder) with camping facilities on north side. DNR fishing pier. Panfish, northerns, walleyes, bass.

CLEARWATER

3,182 acres. The area's largest lake. Two public accesses on the west side. Best fishing in the area for northern, walleye, panfish and largemouth bass.

FRANCIS

1,172 acres. Public access on the northwest side. Panfish, northerns, bass, walleye.

FRENCH

332 acres. Public access on the northwest corner. Some trophy walleyes with crappie, northerns and carp.

GRANITE

339 acres. Public access on west side. Sunken island good for crappies, bass, walleyes and northerns.

JOHN

411 acres. Public access on the south side. Nice size panfish along with bass and northerns.

INDIAN

129 acres. Public access on the south side. Lots of panfish and a few nice northerns.

LIMESTONE

188 acres. Public access on the north side. Resort and campground. Weedless lure will catch northerns, bluegills and bass.

LOUISA

179 acres. Public access on Lake Marie. Some large pike, panfish.

MARIE

141 acres. Access on the northeast side. Panfish, northerns. Scenic Fair Haven Mill dam on lower east side.

MARY

209 acres. Public access on the northwest side. County park. Panfish, northerns, walleyes – and some two-pound crappies.

MINK-SOMMERS

459 acres. Public access on Sommers Lake. Five-pound northerns, panfish.

NIXON

56 acres. Access on the north end. Sleeper bass. Bluegills and northerns.

PLEASANT

509 acres. Adjoins city of Anandale. Two public accesses (one on the south side, one in the new Clearwater-Pleasant County Park on the north side). One of the top 100 walleye lakes in the state. Bluegills, bass and northerns.

SUGAR

1,050 acres. Public access on the north and south ends. Resort. Wright County's only muskie lake. Northerns, bass, panfish and walleye.

EAST LAKE SYLVIA, WEST LAKE SYLVIA

1,524 acres. Public access on West Lake Sylvia (west side). The cleanest in the area with 30-inch walleyes. Panfish, bass and northerns.



Aquatic Invasives DO YOUR PART

The long, hard fight against aquatic invasive species in the Heart of the Lakes area and many parts of Minnesota is ongoing. In recent years several types of AIS have made their way into Annandale area lakes. That list includes starry stonewort, Eurasian watermilfoil and zebra mussels.

Agencies and volunteers have stepped up the fight on area lakes. Many have ongoing initiatives in place to fight invasives.

For specific lakes and launches, check all signage to make certain your watercraft is legal. Also, visitors and residents should keep up to date on lakes they are using.

For more on invasives, check with local lake associations, including the Greater Lake Sylvia Association, Cedar Lake Conservation Club and others, who are taking an active role in the fight (see the website listing on this page). Also, visit the DNR website, the Advocate's archives on its website, and www.wright-swcd.org.

Prevent the spread

Regardless of the invasive species in question, boaters should be aware of legal guidelines for protecting lakes and other bodies of water. All boaters are required to:



- Clean all visible aquatic plants, zebra mussels or other species from watercraft, trailers and equipment before leaving a water access or shoreland.

- Drain equipment, including boat, ballast tanks, bait containers, bilge, live well and bait well by removing drain plugs and keeping them removed during transportation. It is illegal to arrive at a lake access with drain plugs in place, to transport aquatic plants or species on a roadway, or to transport water from lakes or rivers.

- Dispose of unwanted bait, including minnows, leeches and worms, in the trash. It is illegal to release live bait into a body of water. To keep live bait, use bottled or tap water.

Those who fail to comply with the regulations can face criminal or civil penalties that can include fines. In addition, a boat lift, dock, swim raft, or associated equipment that has been removed from any infested water body throughout the state may not be placed in another water body until a minimum of 21 days have passed or unless they have been washed at an approved wash station.

RE/MAX ADVANTAGE PLUS



Discover
The Real Estate Advantage

270 Elm Street East | Annandale 320-264-9241

Annandale.TheRealEstateAdvantage.com

A photograph of a blue and white pontoon boat with a canopy, floating on a calm lake under a sunset sky.

'WE ROCK THE BOAT'

Full Line of Parts & Accessories • Pontoon Trailer Rentals
Indoor & Outdoor Storage • Shrink Wrap
Winterizing By Full Factory Trained Techs

A small black and white motorboat with a canopy.
A yellow and black utility vehicle, possibly a golf cart or maintenance vehicle.

J&J MARINE Inc.
Sales & Service

Monday-Friday 8 am - 5:30 pm • Saturday 8 am - 1 pm
www.jjmarineinc.com 320-236-3625 (DOCK)
4 Miles West of Annandale, HWY 55, SOUTH HAVEN

A bit of the past CABIN LIFE

If you're looking for a short term stay on one of the lakes in the Annandale area, you may want to consider Lake Augusta Cabins.

Max and Lucero Avalos purchased what was known as Thistle Dew Resort, which was originally Lake Augusta Beach Resort, in November of 2022.

Max had a connection to the previous owner Dr. Dorothy Welch and had stayed at the resort when he was a Rotary exchange student. Welch, who passed away in January of this year, was Max's Rotary host-mom.

Max noted that Welch wanted the history of the resort preserved, and the Avaloses were a perfect fit.



Since opening two summers ago, the couple have continued to invest in the property, and it has been well-accepted by visitors.

"It offers rustic cabins with an option of modern comfort with the feeling of floating over water. All the cabins provide great view of the lake, as most cabins sit between 30 and 40 feet from the lake shore," Max said.

"Some of the main attractions of the property is the rustic charm that it has to offer, beautiful lakeshore, kayaking, boating, great fishing, and a relaxing comfortable stay."

■ The cabins are located on the south side of Lake Augusta, not far from the Wright County Swappers Meet. They are located at 10049 Newton Ave. NW, South Haven. The website is: www.lakeaugustacabins.com.



LAKE ASSOCIATIONS

The Heart of the Lakes area has a good number of active lake associations. If you own a home or cabin on a lake, or are interested in lake related issues, join a lake association. Dues are usually very reasonable and members can be both active and semi-active. Most associations have annual meetings, most often during the summer months.

- **Camp Lake Association**, Ryan Bollman, chair, 320-241-5543, website: www.camplake.org
- **Cedar Lake Conservation Club**, president Greg Duppler, email: greg.duppler@yahoo.com, website: www.cedarlakecc.org
- **Clearwater Lake Property Owners Association**, president John Hoppe, email: contact@clpo.org, website: www.clpo.org

- **Clearwater River Watershed District**, chairperson Robert Schiefelbein, 320-398-8400, email: rgaaab@meltel.net, website: www.crwed.org
- **Cokato Lake Improvement Association**, president Louis King, 612-490-0482, cokatolakeexperience@gmail.com
- **Granite Lake Watershed Association**, president Scott Quiggle, website: www.granitelakewatersh.wixsite.com/granite-lake-watersh
- **Lake Francis Area Recreation and Conservation Club**, president Craig Panning, 952-449-1286, website: www.lakefrancismn.org
- **Lake John Association**, president Topher McKinlay, email: president@lakejohnassociation.com, website: lakejohnassociation.com
- **Greater Lake Sylvia Association**, president Randy Wilson, website: www.lakesylvia.org
- **Mink and Somers lakes**, chairperson Guy Vance, website: www.minksomers.org
- **Pleasant Lake Association**, president Kyle Bauman, website: www.pliamn.com
- **Sugar Lake Association**, chairperson Dan Erdmann, sugarlakemember@gmail.com, website: www.sugarlake.org



The City of Annandale Working for You!

- Annandale offers many amenities and a low tax rate
- Close to the Twin Cities Metro Area and St. Cloud
- Excellent School System • Parks & Recreation

Put your business in the
Heart of the Lakes and
watch it grow!

We are expanding our growing
Business Park to serve you!

CONTACT US TODAY!

If you're considering expanding or relocating your business, consider Annandale. We're just 45 minutes from the Metro area and 25 minutes from St. Cloud. Our Annandale Business Park is ready to accommodate your business or industry.

We offer: • Low Tax Rate • Large, Qualified Labor Force
• Easy Highway Access



30 Cedar Street East, Annandale, MN 55302 Phone: 320-274-3055
Email: city@annandale.mn.us • www.annandale.mn.us





Explore **PARKS & RECREATION**

The summer months open endless possibilities for outdoor recreation in the Heart of the Lakes. Annandale's trail system is expanding, a handful of exceptional state and county parks are nearby, and there are multiple opportunities to engage in sports like softball, golf, tennis and more.

For youth, there are many opportunities to play baseball or softball at various levels of competition in a traveling league. Annandale Community Education also offers a variety of summer activities.

Adults might enjoy taking in a baseball game played by one of the best Class C teams in the state, the Maple Lake Lakers. Those who still want to play can join a slowpitch softball league in Annandale, or pursue a less traditional sport like disc golf at Clearwater-Pleasant Regional Park or a round of paintball at a nearby course.

Golfing is a main attraction in the area, with three high-quality golf courses located in or within a few miles of town, and many others located nearby.

The Southside Trail now connects various trail segments south of Highway 55 this year and creates a continuous 2.7-mile link from Southbrook to Minnesota Pioneer Park that bikers, runners and walkers will appreciate for years to come.

Families can enjoy their choice of beaches to handle hot summer days, visiting two on Pleasant Lake or the Schroeder Park beach on Cedar Lake. A beach house is open at Annandale Municipal Park.

Those looking for a more wooded walk can find it at beautiful trails in Wright County's Robert Ney Regional Park and Stanley Eddy Regional Park, each just a few miles east and west of Annandale, respectively. More trails and activity options are available a short distance to the northeast at Lake Maria State Park.

Read on for more details about each of those items.

OUTDOOR ATTRACTIONS



Baseball-Softball Traveling League

■ Youth ball games are as common as fishing poles in the Heart of the Lakes. The traveling league, for kids age 9 to 18, begins each year in late May and ends around the first week of August. Throughout the summer, the fields around Annandale are busy most evenings, including Annandale's new rec park. For registration and schedule information, visit www.annandalebbbsb.org.

Community Education

■ There are lots of activities for younger children. Annandale Community Education offers an assortment of classes, clubs and sports. Visit www.isd876.org, click on Community Education and follow the links to view a catalog of youth and adult programs. Printed copies are also available, or call

274-3058 Monday through Friday, between 8:30 a.m. and 4:30 p.m.

Maple Lake Lakers

■ Baseball fans will enjoy a night out at historic Irish Stadium in Maple Lake, home of the Maple Lake Lakers. The amateur baseball team consists of former college and high school athletes who play because they love the game. The ball field is lit up most Wednesday, Friday and Sunday nights during the summer starting in May, and seats are inexpensive. For a complete schedule of games, visit www.maplelakelakers.com.

Softball

■ Slowpitch softball leagues play during the summer months at Annandale Municipal Park. Look for men's action on Thursday and Friday evenings. Grab a seat or get in the game. Concessions are available.

Tennis, pickleball

■ As part of the Annandale Rec Park project, new tennis courts were completed in the summer of 2017. They are behind the high school and open to the public in the summer. Pickleball courts are also being constructed.

■ The tennis courts alongside Annandale Middle School make a recreational game of tennis appealing to area visitors and residents. The courts are open to the public throughout the summer.

Disc golf

■ Clearwater-Pleasant Regional Park has a disc golf course across the road from the main park. It's clearly marked, and there is parking. The holes vary in length, making it an attractive activity for all abilities.

10,000 LAKES RECREATION

ANNANDALE MUNICIPAL BEACH

RENT A PADDLE BOARD OR KAYAK TODAY

RENT IN 3 EASY STEPS

DOWNLOAD THE APP | CHOOSE YOUR EQUIPMENT | ENJOY!

Icons: App, Paddleboard, Kayak

READY TO RIDE SALES EVENT

SEAWOOD

TRUEMAN WELTERS POWERSPORTS

1600 Hwy. 55 & Co. Rd. 134, Buffalo

763-682-2200

www.trueman-welters.com

OUTDOOR ATTRACTIONS

Paintball

■ Annandale Paintball offers a fun and exciting summer activity for individuals 8 years and older. Having been in business for over 15 years, they have extensive experience ensuring a fun and safe afternoon is in store.

Sharing a parking lot with the Wright County Swappers Meet, located at 13659 100th St. NW, South Haven, Annandale Paintball features multiple playing fields that are all surrounded in netting. This netting ensures paintballs are kept on the playing field, while allowing spectators the ability to view the game.

They offer three versions of paintball, so that it best fits the group outing. Additionally, paintballs are 100% washable and biodegradable.

For younger players who are 8 to 14, there is family friendly paintball. These markers are spring powered instead of air, and are designed especially for kids. The intermediate level offered is low



impact paintball. Using a smaller paintball, and slightly slower speed, this is the perfect version available to first time players, and those who are 10 and older.

Traditional Paintball is for those that have experience playing paintball, and is the version that most people are familiar with when they think of paintball.

Annandale Paintball also offers airsoft, laser tag and gel blaster games. Annandale Paintball offers rental equipment that includes everything needed to play, without time limits.

To learn more or to make a reservation visit www.annandalepaintball.com or call 320-274-8242.



274-3284
www.annandale.mn.us

Your Local Source for:

- License Tabs
- Vehicle Title Transfers
- Expedited Titles
- DNR Registration & Regulations
- Notary Public

Motor Vehicle

Annandale City Hall
30 Cedar St. E., Annandale
8-4:30 Monday-Friday

IT ALL ADDS UP REDUCE • REUSE • RECYCLE

...make it second nature!

Need Help Disposing of Unwanted items?

The Wright County Compost and Recycling Facility, 505 County Road 37 NE, Buffalo, is available for public drop-off of household hazardous waste, electronics, appliances, used tires, recyclables, and scrap metal.

Visit our online tool at: www.co.wright.mn.us/162/Compost-Recycling-Facility and schedule your drop off in just a few minutes.

Let us help you get rid of your old items for a small fee. See the website for more information.

Open: Tues., Wed., Thurs. 8 am–5 pm

• **Second & Third Saturday of the month 8 am–Noon.**

**For more information visit the website
or call 763-682-7338**



Lake Area Recycling Opportunities

Most recyclers accept clear, green & brown glass, newspaper, tin & aluminum cans. Some also accept corrugated boxes, auto batteries & plastic bottles (with a neck) labeled with recycling arrow and number 1 or 2. Call your city or township office if you have questions about which items your local recycler will accept and which days.

**For more information contact Wright
County Solid Waste at 763-682-7331**

Paid for by Wright County Solid Waste



Walking, running, biking

■ The Southside Trail extension project was completed in the summer of 2017. It links the southern side of town together. During the project, 1.2 miles of new trail segments were constructed to connect existing trails and form a continuous 2.7-mile link from Southbrook to Minnesota Pioneer Park.

■ A nice walking, running and biking trail from Annandale begins on the west side of Pleasant Lake and ends at Clearwater-Pleasant Regional Park, which also has a lovely path system. Be careful of traffic on County Road 5 (Montgomery Ave. NW) out of Annandale. There is no path from the park back to town on Highway 24, but road reconstruction in the fall of 2007 widened the shoulders. A trip around the lake is about 5.3 miles. From Annandale Municipal Park to the CPRP and back (on the path) is a mile or two longer.

Swimming

■ Swimming is available at the Annandale Municipal Park beach and the Clearwater-Pleasant Regional Park beach. At the city park, volunteers have improved the beach house and helped make the beach family-friendly.

The beach house is usually open from



mid-June through mid-August. Concessions are available, along with games and towels, and accessories are for sale. No lifeguards are on duty. 10,000 Lakes Recreation rents paddle boards at the Pleasant Lake beach area.

Another nearby beach is Schroeder Park on Cedar Lake. It is part of the Wright County Park system and offers a number of amenities (see the article in this Guide) and is a just short distance from Annandale.

SUP

There is an loosely organized Standup Paddle Boarding group in Annandale. For more information contact Anchor Dock and Lift at 320-274-6500. SUP boards are sold and rented locally at several outlets, including Anchor Dock, Little Jim's and Clearwater Outfitting. SUP boards are also available from 10,000 Lakes Recreation. See the ad on page 57.



CW Outfitting RIVER TRAVELS

If paddling the beautiful and scenic bends of the Mississippi River where bald eagles soar and deer can be seen drinking at the water's edge is what you're looking for, there's one area family that's got you covered.

Sandra and Dan Meer, owners of Clear Waters Outfitting, have turned their passion for the outdoors into a livelihood that has people falling in love with the sport and river.

"When you put a paddle in your hand and shove off from shore, whether it's a lake or river, the rest of the world has a tendency to just slip away," said Dan Meer.

Since opening its doors in 2009, CW Outfitting has quickly become a destination for beginner and experienced paddlers alike.

Serving thousands of paddlers each year CW Outfitting is now Minnesota's premier Mississippi River outfitter and paddle sport specialty store.

Located on the banks of a state-designated "wild and scenic" stretch of the Mississippi River, CW Outfitting is within a stone's throw of the Highway 24 bridge leading out of Clearwater, only about 20 minutes from Annandale.

See more on the
**Mississippi State
Water Trail** on
page 64.

"Living in this state, there is a growing desire to experience the water in new ways," Meer said. "On our river adventures, it's just you and the river. It helps to put life into perspective.

"Whether beginner or experienced, we have a bunch of options for you to choose from, and we offer the perfect way to enjoy our Minnesota summers."

Complete outfitter and paddle specialty store

The area's only complete outfitter and paddle sport specialty store, CW Outfitting offers half-day, full-day and multi-day paddling adventures.

There are rentals, shuttles, and all different types of paddle sport equipment for sale including: paddle boards, recreational kayaks, touring kayaks, fishing kayaks and canoes.

CW Outfitting will do free delivery and pickup, with a three-day rental, within 15 miles of Clearwater.

More information

For more information or to schedule a paddle trip, contact CW Outfitting at 320-558-8123 or visit www.cwoutfitting.com.



The **PERFECT** Day

CW OUTFITTING

MN's Premier Mississippi River Outfitter
& Paddle Sport Specialty Shop

the
RIVER
is
CALLING.

320.558.8123 | CWoutfitting.com
Clearwater, Minnesota

Fields of dreams HERE'S WHERE THE ACTION IS



The 80-acre Annandale Recreation Park is enjoying excellent success, and this year, the park will be the site of many games, tournaments and activities.

If you visit the park on any given weekend in the summer months, chances are good you will find a youth softball or baseball tournament underway.

Visitors to the park can also enjoy the trail that circles the park.

Phase I of construction began in the spring of 2016 with road and field grading, the installation of drainage systems and water mains.

Phase II saw the construction of the ball fields, the tennis courts, the walking trail and parking lot in 2017.

Completed in the summer of 2017 and available for use by the public are the eight new tennis courts, located at the back of Annandale High School.

All parking areas are paved with curbing around them and the access road from the park to Hemlock has been paved.

The three football-soccer fields began being used in the late summer of 2018.

The concession-press box building

was also completed by the Annandale Lions Club.

Batting cages, funded by the Annandale Athletic Foundation, have been installed for both baseball and softball.

2015 referendum

The project was funded by a \$4 million school district referendum passed by Annandale School District voters in November of 2015. The question was approved by a 69-39 percent margin.

Discussions on the need for additional recreational facilities began in Annandale around 2003. Passage of the referendum was the culmination of more than a decade of effort to address the issue.

The referendum dollars along with private and civic donations provided the project with a \$4.4 million budget.



Joint powers

The City of Annandale and the Annandale School District have formed a joint powers agreement and share equally the future costs of the operations and maintenance.

Future plans

Many additional features have been outlined for the park, but those will be added by private donations, civic organizations or the city as revenue is available.

Possibilities for future facilities include basketball and volleyball courts, horseshoe pits, bocce ball courts, a skate park, dog park, splash pad, additional multi-use fields and additional infrastructure, such as lights for the tennis courts.

Wright County PARKS



Wright County is blessed with some beautiful geography, from rivers and lakes to woods and prairie, and there are few better ways to experience what nature has to offer than by visiting one of the nearly 30 parks, reserves, waysides and accesses that make up the Wright County Parks system. Refer to the Events Calendar for scheduled summer activities.

Clearwater-Pleasant

Nearest to Annandale is the Clearwater-Pleasant Regional Park on the north side of Pleasant Lake. It is very popular with families. This park features a large swimming beach, park pavilion, bathroom facilities, a playground, a Department of Natural Resources public boat landing and fishing pier, and walking and biking trails that stretch through the entire 210-acre park.

The trail starts on County Road 5 on the west side of Pleasant Lake and winds its way to the park. The six-mile journey, either walking or biking, might make you a little hungry, so pack a lunch and enjoy it at the park.

A disc golf course was added and the playground area was expanded in 2005. In addition, the trail system has been updated, making CWPRP even more attractive.

The disc golf course is across the road from the main park. It is clearly marked, and parking is available. The holes vary in length, making this an attractive outdoor activity for all abilities.

Lake Maria

Lake Maria State Park will offer a variety of programs and events during the summer. The park is located approximately 10 miles northeast of Annandale on Wright County 111. A paradise for hikers, horseback riders and campers, there are 14 miles of hiking trails, plus six miles of horse trails.

Schroeder Park

Rivalling Clearwater-Pleasant Regional Park for variety of features is Schroeder Park on Cedar Lake, a short drive north and east of Annandale.

Schroeder Park features a fishing pier, creative play area

for the kids, hiking trails, a boat launch and a beach area. An extensive upgrade to the camping and park facilities was completed in the summer of 2023.

At both Clearwater-Pleasant and Schroeder, the swimming area is marked by buoys. There is no lifeguard on duty.

Ney Nature Center

Another county park close to Annandale is the Ney Nature Center just north of Maple Lake. It features a large number of interpretive programs and ski trails in the winter, and lots of hiking trails and other amenities in the summer. Take County Road 8 north and just watch for the signs.

Stanley Eddy

The Stanley Eddy Park Reserves south of South Haven are open for horseback riding and hiking in the summer and skiing in the winter. It has a bike trail as well.

The four units of the reserves make up 658 rolling acres of scenic beauty. This is the perfect park for the hiker.

Camping options

One feature that Schroeder holds above that of the Clearwater-Pleasant Regional Park is 1x that of overnight camping on the lake. It is one of two locations in the county park system that offer conventional camping – the other being Collinwood Park near Cokato.

There are also canoe camping or backpack camping options available in Wright County. Canoe camping sites are available on the North Fork of the Crow River, including at Albright's Mill County Park south of Annandale on County Road 5. Remote backpacking camping sites are also available at Stanley Eddy Memorial Park Reserve near South Haven. There is no charge for using these campsites and they are available on a first-come, first-served basis. A use permit is required.

Contact the Parks Department office at 763-682-7693 a few days before your trip to obtain a permit.

■ Visit www.co.wright.mn.us for more on the parks system.

Fun outdoors CAMPS

Camp Friendship

■ Location: 10509 108th St. NW, Annandale. Ten acres of the camp are located off Clearwater Lake, an additional 60 acres are located across the lake access road.

■ Phone: 274-8376

■ Website:

www.truefriends.org

■ Founded: In 1964 by Arc Minnesota. A group of parents established a facility where they could entrust the care of their children with disabilities to others for short periods of time.

■ Mission: Camp Friendship is owned and operated by Friendship Ventures, a non-profit agency. The camp offers resident camp programs for children, teenagers and adults with development, physical or multiple disabilities, special medical conditions, Down Syndrome, autism or other conditions. Many sessions are open to siblings or friends without disabilities. The camp has many modern amenities, including a program center with an indoor gym and swimming pool, modern cabins, a dining hall, large swimming beach, animal farm, tree house and much more. It features dozens of indoor and outdoor activities. Scholarships are offered for those with limited financial resources.

Camp Courage

■ Location: 8046 83rd St. NW, Maple Lake.

■ Phone: 963-3121,

■ Website: www.truefriends.org

■ Founded: Originally founded in 1938 on the shores of the St. Croix River, east of Hinckley. It was then moved to the east side of Cedar Lake near Maple Lake in 1955.

■ Mission: Camp Courage is a barrier-free residential camping facility serving people of all ages with physical disabilities and kids with speech/language/hearing impairments. It offers a safe, accessible natural environment where campers discover abilities they never knew they had or thought they had lost. During the school year groups rent the facilities for retreats. There are also a number of volunteer opportunities available. The camp encourages campers to visit, regardless of ability to pay; referrals are welcome.

In addition to Camp Friendship and Camp Courage, there are also several other area camps. Each has its own rich history and serves one or many needs; they are non-profit and have distinct missions that benefit campers from the local, state, regional and even national area. Most of the camps operate year-round. Check with a specific camp for programs that are offered in the fall and winter.



True Friends

Camp Chi Rho

■ Location: 5750 Porter Ave. NW, Annandale, southeast side of West Lake Sylvia.

■ Phone: 274-8307

■ Website: www.chirhocenter.org

■ Founded: Formed in 1967 by St. John's Lutheran Church in Minneapolis.

■ Mission: Camp Chi Rho and retreat center is located northwest of Annandale. The 76-acre site sits on a peninsula overlooking West Lake Sylvia. The center offers educational camps and Bible programs for youth during the summer months. It's also used for other programs, like the Arrowwood basketball camp for girls. The camp and center are available for organizations and groups like schools, churches and family reunions throughout the year. Visitors are welcome. Call or stop for more information.

The Fields at Wellsprings Farm

■ Location: 13537 47th Street NW, Annandale

■ Phone: 612-619-5290

■ Email: info@wellspringsfarm.org

■ Website:

www.wellspringsfarm.org

■ Founded: This retreat center was organized by the nonprofit organization The Fields and homesteaders Dan and Joan Pauly Schneider in 2015 after Clare's Well closed at the same site.

■ Mission: The Wellsprings Farm Community Supported Retreat model hopes to foster an evolving community oriented toward healing, listening and mutual responsibility

grounded in inclusive spiritual and ecological principles. The retreat might be the first Community Supported Retreat Model in the country. Visitors purchase stay shares at the retreat center.

Stearns Scout Camp

■ Location: 3303 County Road 44, South Haven

■ Phone: 236-7879, 236-7494 for summer camp only, fax: 236-7879

■ Website: www.northernstarbsa.org

■ Founded: 1968

■ Mission: Located on 1,200 acres in rural South Haven, the year round camp is used primarily by Boy Scouts and Cub Scouts, although youth and church groups do use the camp on occasion. The camp is visited by thousands of scouts each year.



AJ Acres offers 150 acres of woods, flowers, trails and lakes where you will be perfectly safe & enjoy solid comfort.



FIND OUT MORE & RESERVE ONLINE OR CALL 320-558-2847!

www.ajacrescampground.com

TRUE FRIENDS IS A TRUE GEM

T rue Friends is a non-profit organization that provides life-changing experiences for individuals with disabilities. Established in 1953, True Friends operates multiple locations across Minnesota, including Camp Friendship and Camp Courage. These locations offer a wide range of programs and services aimed at promoting independence, inclusion, and personal growth. Programs include camp, respite, retreats, team building, therapy and adaptive riding, and travel.

One of the key aspects of the True Friends approach is its commitment to accessibility. All facilities and programs are designed to accommodate individuals with diverse needs, ensuring individuals of all abilities can participate fully and comfortably. From barrier-free cabins to adaptive equipment, True Friends strives to remove physical and logistical barriers, allowing individuals with disabilities to explore new experiences and enjoy the outdoors without limitations.

Camp Courage

Camp Courage has been serving individuals of all abilities for over 60 years. It lies on 305 acres of scenic lakeshore, woods, and fields near Maple Lake, on beautiful Cedar Lake. It offers multiple



meeting facilities and has two campuses: Lakeside and Woodland, both with year-round lodging.

Camp Friendship

Camp Friendship has 115 acres of scenic woodlands and a fully outfitted waterfront on Clearwater Lake. It has been operating since 1964 and is located in the central lakes area, just 60 miles northwest of the Twin Cities near Annandale, Minnesota.

Campers at both locations can enjoy various activities that include arts and crafts, fishing, swimming, boating, tubing, horseback riding, archery, zip-lining, hay rides, campfires, music, and so much more! Both adult and children sessions exist to provide fun experiences for all ages. Sessions this summer are still available.

Check out how to sign up at www.truefriends.org/camp.

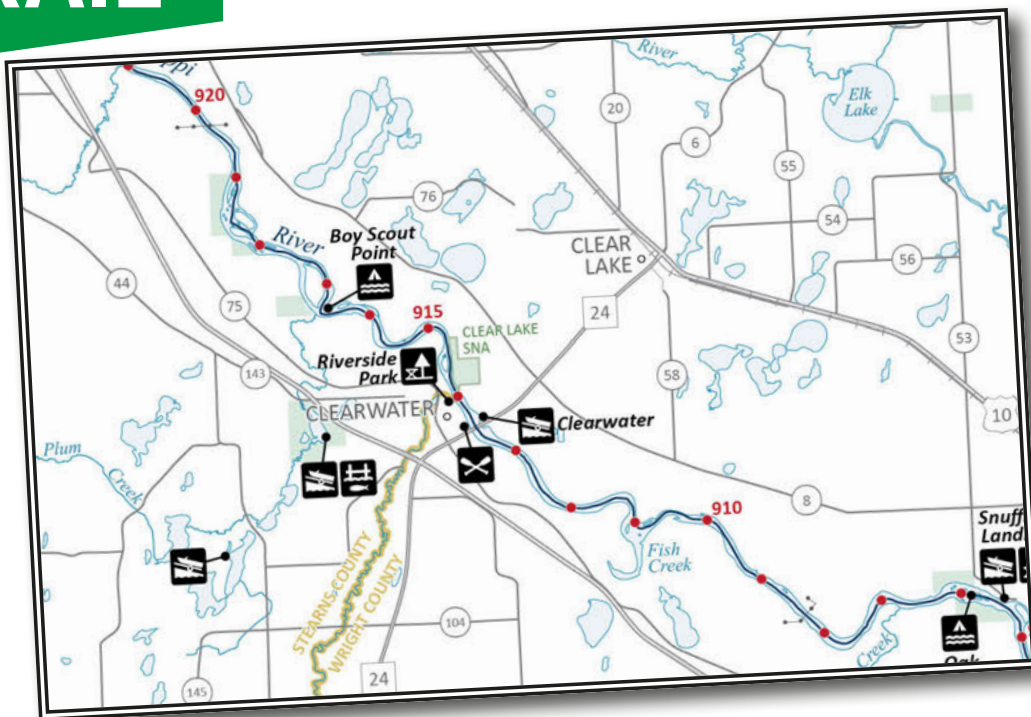
Mississippi River State WATER TRAIL

T he Mississippi State Water Trail is located north of Annandale where the river flows through a valley that features bluffs, islands and sandbars teeming with a wide variety of plants and animals.

In 1973, the section of the river where the trail is located was designated as a Minnesota Wild and Scenic River and is on the State Water Trail System. The fully navigable waters are open to small motorized boats, canoes, kayaks, etc. throughout the season.

Multiple accesses are available along the trail to launch your watercraft. Moderate rapids and currents provide family-friendly paddling opportunities.

Northern pike, smallmouth bass and walleye present great angling opportunities as well. If you need gear, local outfitters are available nearby to help with shuttles and rentals.



Stroll the Links TEE IT UP



By Dave Greve

To be an avid golfer and live in Annandale has been a great match for me the past many years. And to have a family who enjoys golf has been a bonus, in that our area has offered us many an opportunity to enjoy the sport.

Whispering Pines Golf Course

Travel to Whispering Pines, Annandale's original golf course, and a player is likely to see the much-the-same course when he plays a round now as when the course opened back in 1986. Several stands of woods filled with birds, squirrels and the occasional deer are just part of Whispering Pines' natural beauty.

Although the course's general attitude is one of "I want an entire family to have fun when they come to play," the course can be anything but a walk in the park. Its stands of strategically placed trees and water hazards make both the novice and the accomplished player take note.

Today the course is an enjoyable 18-hole layout, having added nine holes in the late 1990s.

Starting with Mark Dvorak's purchase of the course in 2012, things began to change greatly. As an example, several stands of trees and brush have been cut and removed, and the ground has been groomed to improve playability and course sightlines. In 2015 Whispering Pines remodeled its clubhouse to better accommodate its guests. It now includes a very comfortable sports bar setting to enjoy a beverage following a round of golf. A newly renovated outdoor patio area overlooks the first and 10th tee boxes, as well as the 18th green. Each golf group can enjoy a post-round beverage on the patio that is enhanced by a beautiful running brook and waterfall.

On the course, literally tons of crushed rock and sand were dumped on the many cart paths and sand traps in previous seasons. Several tee boxes have been leveled and enlarged. A new fleet of carts, a new liquor license, new golf leagues and new ball washers highlight a long list of improvements to the overall golf course's amenities. And yet, improvements continue to happen. During the past couple seasons, the course has upgraded to GPS systems on each cart to better help the players make club selection on the course.

While the original beauty of the course, and its great layout, haven't changed, the clean look of the traps and true rolling greens make "the Pines" a must-play attraction for area residents.

The course now offers many leagues and an ever increasing number of events to suit just about every level of golfer.




Having known the Dvoraks for many years (Mark played for me on the Annandale golf team), I know that they will continue to work hard to improve both the on-course and clubhouse product each and every year.

Albion Ridges Golf Club

While Whispering Pines was designed by capturing the beauty of its natural stands of oaks and cedars on its rolling terrain, Albion Ridges Golf Course, approximately five miles southeast of Annandale, was developed from the rolling terrain of Dennis and Joann Olson's rich black farmland.

Despite very few natural stands of trees, Albion Ridges, designed by Todd Severud, opened in 1991 to rave reviews. It was obvious to everyone that it would become one of the very best conditioned public courses in Minnesota. That initial opinion has not changed and today includes 27 holes of public golf as good as you will find anywhere. A third nine was added in 2000.

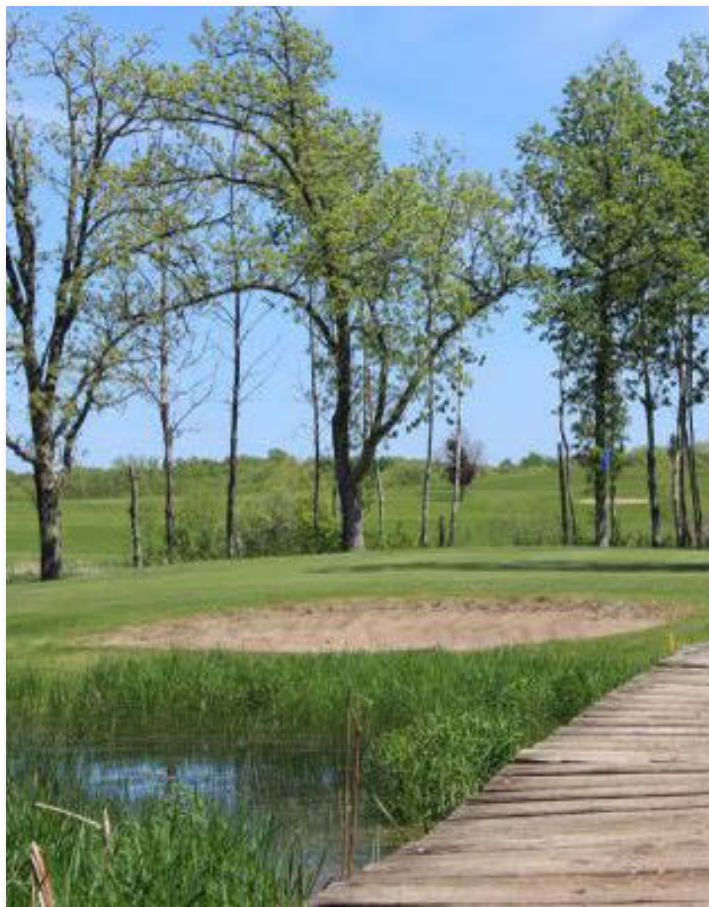
Owners LeRoy and Michelle Wurm took over from Dennis and JoAnn Olson in 2018, and bring new ideas to the course operation, yet provide the same quality service and condi-

 <p>Southbrook Golf Course</p> <p>511 Morrison Ave. S., Annandale</p> <p>320-274-2341</p> <p><i>Conveniently located between Annandale and Lake John on Cty Rd. 38</i></p>	<p><i>Golf at its Finest!</i></p>  <p>GOLFER SPECIALS!</p> <table border="0"> <tr> <td>Wild Wednesday</td> <td>18 holes w/cart</td> <td>\$28</td> </tr> <tr> <td>After 5 pm Everyday!</td> <td>9 holes w/cart</td> <td>\$15</td> </tr> <tr> <td>Twilight Golf After 3 pm</td> <td>18 holes w/cart</td> <td>\$28</td> </tr> </table> <p> www.southbrookgolf.com</p>	Wild Wednesday	18 holes w/cart	\$28	After 5 pm Everyday!	9 holes w/cart	\$15	Twilight Golf After 3 pm	18 holes w/cart	\$28
Wild Wednesday	18 holes w/cart	\$28								
After 5 pm Everyday!	9 holes w/cart	\$15								
Twilight Golf After 3 pm	18 holes w/cart	\$28								

tions that have always marked the Albion Ridges reputation. As the long time course superintendent, the outstanding care by LeRoy and his maintenance staff continues with excellent greens, tees and fairways that many golfers compare with the best in the state. Michelle, who was an outstanding high school golfer for me at Annandale, and a member of the nationally-ranked Minnesota State, Mankato golf team, brings a fresh perspective to this great course.

Beginning his third full season as the clubhouse manager, PGA Professional Steve Fessler brings a wealth of expertise to Albion. Steve has a long list of accomplishments and awards from the golf community including winner of the prestigious Horton Smith Award given to the top professional in the Minnesota Section of the PGA each year. Since 2004, he has been named a top 10 teacher in Minnesota by Golf Digest and has been a PGA Award Top Junior Leader. In 2015-16, he served as the president of the Minnesota Section of the PGA and was a section board member from 2000-2018. And, in December to add to his achievements, Steve was named the 2022 Minnesota PGA Professional of the Year! Needless to say, Albion Ridges is in good hands. Steve is available through the clubhouse for individual and group lessons.

I can't think of another course that has a design that allows players of all levels to enjoy the experience as much as this one does. Novices and high handicappers love playing at Albion because it allows them to spray the ball all over and still have some sort of shot to the green. Additionally, it has four tees on each hole to choose from, giving players the chance to find a playing distance that suits their games. There isn't an overabundance of sand traps or water, but just enough of them, and they are strategically placed at that.



But even though it appears to be wide open, it is also as much a challenge to the low handicapper as it is welcoming to the high handicapper. Quick, undulating greens that roll true test the nerves of even the best players. Unless players are driving in the fairway, it is challenging to hit a shot close to the pin. Even at that, approaching from the fairway is often not enough, as good pin positioning can force players to approach from the "correct" side of the fairway. And approaching from the lush rough does not allow the top player to control trajectory, distance or spin to consistently give himself the type of chance at birdie that he would like.

Arriving at Albion Ridges, players will be met with a long fleet of golf carts near the well-maintained clubhouse area. Started in the summer of 2021 and completed last spring, Albion's clubhouse received a complete makeover, enticing golfers to enjoy a post-round relaxing discussion. As always, the staff provides a friendly and welcoming atmosphere for area and Twin Cities golfers alike.

Southbrook Golf Club

The dream of Daryl Gunnarson began to take shape in the early 1990s, when he and his partner, Clint Olson, built Southbrook Golf Club as part of their larger golf course community. Now in year six of Clint's daughter- and son-in-law Holly and Brian Peterson's ownership, Southbrook is a family run course, and employs a friendly and helpful staff.

Playing at Southbrook, you will enjoy great rates and great course conditions. Annexed to the west side of Annandale, the course weaves through several wooded areas, single-family residential areas and a whole lot of wetlands. In fact, Southbrook sports no less than 17 holes with some

RATED #20 BEST MINNESOTA PUBLIC GOLF COURSE BY GOLFPASS



NEW FEATURES

- Club Car fleet with GPS
- Remodeled Driving Range
- New Asphalt Cart Paths installed
- New Granite Tee Box Signs
- New Patio Setup Including: New Pergola, Furniture & Giant Waterfall To Enhance Your Outdoor Dining.

WE OFFER:

- Senior Rates
- Thursday Morning Senior League
- Wednesday Night Volleyball League
- Thursday Night Palmer League
- Punch Card Pricing: Best In The Area
- Online Tee Times
- And More!



WHISPERING PINES GOLF COURSE

VISIT OUR SISTER COURSE IN BRAINERD!



2465, 8713 70th St. NW, Annandale, MN
(320) 274-8721 • www.whisperingpinesgolf.com

form of water hazard to challenge players of all levels. Its well-manicured fairways and lush roughs put a premium on driving accuracy.

The course is probably the easiest to walk in the area as it is built on flat land and, in some regards, the most difficult to score on. The front nine makes its way through the golf community that expands each and every year, while the back takes a more traditional golf setting, away from the homes of Southbrook.

Southbrook's huge teeing areas and three separate tees on most holes, are made of bent grass, which makes them a treat from which to start each hole. While the novice golfer can play the course from one of the course's two front tees, the low handicapper can challenge himself from the back blues.

That challenge is exemplified on each of the par fives where the back tees can add up to 75 yards more than the distance from the white tees. This extra distance makes the par fives the most challenging part of the Southbrook experience for me. No hole exemplifies this more than No. 18. Many a round has been shipwrecked near the shores of this challenge, but no trip to Southbrook should be avoided for fear of running aground here. There are enough "friendly" holes to make this a completely enjoyable experience for every level of golfer.

You get more than good golf at Southbrook. Brian and his staff are constantly striving to improve the course's playability. Add to that a beautiful clubhouse and a party room on the lower level. Tournaments, junior golf clinics and the home of the Annandale High School golf teams just add to the allure of the course. Andrew Daniels has taken over the restaurant operation. The great menu and fine relaxing atmosphere make the Southbrook Grille bar and restaurant on the upper level a fine social facility. The view from the deck of holes one, 10 and 18 make for a great setting to enjoy the round just completed.

These beautiful facilities allow Southbrook to be a complete entertainment package.

Kimball Golf Club

Travel a short distance to Kimball and enjoy the scenic Kimball Golf Club. Joel Goldstrand was called in to design a new nine holes when in the late 1990s Kimball decided to go to 18 holes from its original nine.

Still hilly, but always well maintained, it offers one of the toughest finishing stretches in the area in holes 14 through 18. Lengthy par fours such as the dogleg No. 14, plenty of marsh-filled risk and reward from the short but treacherous No. 15 with its island green, and the tight landing area on the long par-five 17th highlight this group.

These and other challenges make the Kimball Golf Club one of the best golfing values around.

More area courses

■ Still more golf is available only minutes away from the immediate Annandale area as golfers can play Eagle Trace along the Mississippi River in Clearwater.

Upgrades have been made to the course, and there are many challenging risk-reward options from the beginner to the pro.

There are 15 acres of man-made lakes in addition to three holes along the Mississippi. No. 11 is the signature hole, and a birdie is rare here. The hole is a visual gem.

■ Take a trip to Monticello and play one of two challenging layouts in the always interesting Monticello Country Club. Drive south from Monticello to Buffalo and find two

other long-standing courses in the small but well-maintained Buffalo Heights and, just a few minutes away, at the challenging Wild Marsh.

■ In addition, there is always the dependable nine-hole Cokato Town and Country Club that is enjoyable because of its small-town flavor.

■ To the west, Koronis Hills Country Club offers 18 challenging holes among scenic, rolling hills.

On any given day during the golfing season, one is likely to encounter an Annandale area resident on any of the fine courses that can be found in the Annandale area.

The area has become a golfing haven to an enthusiast such as myself. I hope that each of you takes the time to enjoy the golfing riches that our beautiful area has for each of us.

See you at the first tee!

Dave Greve has been teeing it up in the Heart of the Lakes for many years. The retired middle school teacher has his share of trophies, and he is a longtime golf coach-instructor. Dave's three sons played high school golf and two competed at the collegiate level. Ben, who is a former Minnesota State Amateur Champion and played for the University of Minnesota, has golfed professionally on the Canadian and Hooters tours. He was the 2019 Minnesota Golf Association Player of the Year and two-time Minnesota State Open Champion.

Locate the links...

Albion Ridges — Go two miles east of Annandale on Highway 55 to County Road 6 and turn right (south). Keep going south for five miles and turn left on County Road 105. Follow the signs for one mile. The course is on the right. For more information, call 963-5500, or 1-800-430-PUTT. The website address is www.albionridges.com.

Kimball Golf Course — Go west of Annandale on Highway 55 to Kimball. At Highway 15 go left (south) through town. Turn left at County Road 150. Course is about one mile on the right. For more information call 320-398-2285. The website is www.kimballgolf.com.

Southbrook Golf Course — From Highway 55 in Annandale turn south on County Road 5, then west on County Road 183. Go one mile and turn left on Morrison Ave. For more information, call 274-2341 or 1-877-292-9630. The website is www.southbrookgolf.com.

(The Driving Range is located before the entrance of Southbrook Golf Course, although it is not affiliated with Southbrook. It is open sun-up until sundown in the summer months.)

Whispering Pines Golf Course — Located a quarter mile north of Highway 55 on County Road 6 or two miles south of Highway 24 on County Road 6. For more information, call 274-8721. The website is www.whispering-pinesgolf.com.



Rated #9
Best Golf
Course by
Golf Pass

IT'S MORE
FUN
TO PLAY
KIMBALL
GOLF!

**KIMBALL
GOLF CLUB**
EST. 1968

Like us on Facebook!
www.kimballgolfclub.com

This is one of Central Minnesota's finest golf courses! Mature trees and rolling hills define the landscape of the **KIMBALL GOLF CLUB**. The course has something to offer golfers of all different skill levels.

11823 County Rd. 150, Kimball, MN • 320-398-2285

AREA CHURCHES



Annandale United Methodist Church
320-274-5127 • 250 Oak Ave. N
Rev. Mark Schlasner, Pastor
www.annandaleumc.org
Sunday Worship, 8:30 am
Fellowship, 9:30 am
Like us on Facebook

Holy Cross Lutheran Church
(LCMC)

Summer Schedule
(May 26–September 1)
Sunday Service 9:30 am
Wednesday Service 6:00 pm
5460 63rd St NW, Maple Lake
www.holycrossmaplelake.org
Vacation Bible School August 5–8

ST. MARK'S EPISCOPAL CHURCH

Sunday Service, 9:30 a.m.
June 9 through Sept. 18
EVERYONE WELCOME! 320-274-3545
10536 108th St. NW, Annandale
(across from Camp Friendship)

Zion United Methodist Church

450 Fairhaven Ave, South Haven
320-249-6756
Worship 11 a.m.
Fellowship 10:30 a.m.
Pastor Lori Artner

Heartland
COME | FOLLOW | SERVE

staff@heartlandfree.com
www.heartlandfree.com
Senior Pastor: Denny Johnson
Sunday Morning Worship: 8:30 & 10:00 am
Vacation Bible School: June 9-13
heartlandfree.com/summer

ZION EVANGELICAL LUTHERAN CHURCH
(LCMS)

360 East Chestnut St., Annandale
320-274-5226
Rev. Tyler LaGrave, Pastor
www.zionannandale.org
SUNDAY Worship, 9 am
Sunday School & Bible Study, 10:15 am
Like us on Facebook

St. John's Lutheran Church, ELCA
331 West Harrison Street, Annandale. MN
(320) 274-8827 www.stjohns-annandale.org
Sunday Worship:
8:30 a.m. Traditional service
10 a.m. Contemporary service
Pastor Todd Nelsen Pastor Alex Becker
Watch our Website www.stjohns-annandale.org
and Facebook for updates & changes

Bethlehem United Church of Christ
400 County Road 37 NE; Maple Lake
320-963-3118; bethuccml@gmail.com
Sunday Worship - 9:30 a.m.
Check Our Facebook Page for Online Services
www.bethlehemmn.org
No matter who you are, no matter where you are on life's journey, you are welcome here.



This summer, area churches welcome you to visit and worship with them.

OUR SAVIOUR'S LUTHERAN CHURCH
14550 County Rd. 37 NW, French Lake
Sunday Bible Study - 9:30 a.m.
Sunday Worship - 10:30 a.m.
<https://oursavioursfrenchlake.org>

**Come.
Join Us**

LAKE COUNTRY BIBLE CHURCH

4943 139th St.,
South Haven, MN 55382

Sunday Worship
10 a.m.

Follow us on
Facebook!



LAKE COUNTRY BIBLE CHURCH

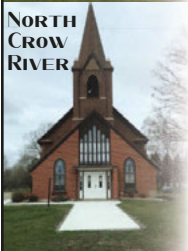
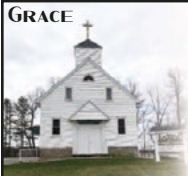
LCBCconnection@gmail.com
www.lakecountrybiblechurch.com

Kimball
CHRISTIAN CHURCH

You're invited to worship with us.
Sunday Worship
8am / 9:30am / 11am

241 State Highway 55
Kimball, MN 55353
(320) 398-3660

KimballChristian.Church



**ELCA
WORSHIPPING CONGREGATION
OF**

GRACE & NORTH CROW RIVER LUTHERAN

Grace Lutheran
17225 20th St. NW,
South Haven

North Crow River Lutheran
45 Quinell Ave. SW,
Cokato

320-286-2354

Sunday Worship: 8:30 AM

1st and 3rd Sunday at Grace
2nd & 4th Sunday at North Crow River

Saint Ignatius
Catholic Church

35 Birch Street E,
Annandale, MN 55302
320-274-8828

www.stignatiusmn.com

Pastor: Fr. John Meyer

MASS SCHEDULE

Saturday Mass - 5:00 pm
Sunday Masses - 8:30 am and 10:30 am
8:30 am Mass is live-streamed on the parish
Facebook page and YouTube channel

Daily Mass - Mondays 6:00 pm,
Tuesdays - Thursdays 8:00 am
(No Daily Mass on Fridays)

RECONCILIATION

5:30 pm Mondays
4:30 pm Saturdays
Or by appointment

**ADORATION OF THE
BLESSED SACRAMENT**

Last Thursday of the month, 8:30 am - 7 pm

FIND MORE INFORMATION ON OUR WEBSITE OR FACEBOOK PAGE.



Explore SCHOOLS & COMMUNITIES

Annandale schools hold a well-earned reputation for serving as quality centers of learning occupied by outstanding students. The school district strives to provide quality education to over 2,000 students. In addition to the traditional kindergarten through grade 12 population, educational opportunities for individuals of all ages are provided through the district's community education program. For more information, see the school district's website at www.isd876.org.

Annandale Elementary School

■ Location: 655 Park St. E. School hours: 8:15 a.m. to 3 p.m. Office hours: 7:15 a.m. to 4 p.m. Telephone: 320-274-8218. Annandale Elementary School serves up more than 900 students from the pre-kindergarten level to the fifth-grade. The school, built in 2013, is located next to the high school.

Annandale Middle School

■ Location: 125 Cherry Ave. N. School hours: 8:10 a.m. to 3 p.m. Office hours: 7:30 a.m. to 4:30 p.m. Telephone: 320-274-8226. About 35 teachers at Annandale Middle School serve about 400 students in grades six through eight. The middle school is located on an 11-acre site downtown.

Annandale High School

■ Location: 855 Hemlock St. E. School hours: 8:20 a.m. to 3:10 p.m. Office hours: 7:30 a.m. to 4:30 p.m. Telephone: 320-274-8208. About 40 teachers at Annandale High School, located on the north-eastern edge of the city, serves more than 500 students in grades nine through 12. The high school building was constructed in 1991 and is designed to meet educational needs of students for many years to come. A 650-seat auditorium-performing arts center was completed in March of 2000.

CITY OF ANNANDALE

City Hall

Phone 320-274-3055, Fax 320-274-5728

Police (non-emergency) 320-274-3278

Deputy Registrar 320-274-3284

Public Works garage 320-274-8520

Website: www.annandale.mn.us

Email: city@annandale.mn.us

30 Cedar St. E., P.O. Box K, Annandale, MN 55302-0136

Mayor Shelly Jonas

Councilors

Tina Honsey, Corey Czychalla, JT Grundy, Matthew Wuollet

City Administrator Kelly Hinnenkamp

Building Official Metro West Inspection Services

City Attorney Susan Kadlec

City Engineer Jared Voge

Deputy Registrar Vicki Jarmon

Fire Chief Kris Townsend

Police Chief Pete Standafer

Public Works

Director Joe Haller

WRIGHT COUNTY

Government Center

Phone 763-682-3900, 800-362-3667

Website: www.co.wright.mn.us

3650 Braddock Ave. NE, Buffalo, MN 55313

Tina Diedrick, Annandale, is Wright County's District 1 commissioner. The district serves Annandale, South Haven, Corinna Township and other areas. Darek Vetsch, District 2, serves the Clearwater area, Silver Creek and Maple Lake. Mike Kaczmarek, District 5, serves the Cokato area, including French Lake Township.

■ For information on Stearns County, call 320-656-3600 or find it on the web at www.co.stearns.mn.us. Jeff Bertram, Paynesville, commissioner in District 3, serves this area of Stearns County, including Lynden, Fair Haven and other area townships.

TOWNSHIP INFORMATION

Albion.....Clerk Debbra Uecker, 320-963-4015

www.albiontwp.mn.gov/office2.com

Clearwater.....Clerk Jean Just, 320-558-4011

www.clearwatertownship.org

Corinna.....Mary B. Brown, 320-274-8049

www.corinnatownship.com

Fair Haven.....Leslie Rose 320-251-3425

French Lake.....Clerk Breanna Chapman, 320-583-0157

Lynden.....Clerk Jenny Schmidt, 320-774-8507

www.lyndentownship.net

Silver Creek.....Clerk Nancy Betzler, 763-878-0141

www.silvercreektwp.com

Southside.....Clerk Carmen Merrill, 320-274-8602

www.southsidetownship.com

CLEARWATER RIVER WATERSHED

The Clearwater River Watershed District maintains an office at 93 Oak Ave. S. in Annandale. The mailing address is: 3235 Fernbrook Lane N, Minneapolis. Phone: 320-274-3935. Copies of all CRWD public documents are on file at the district's office. The website is www.crwd.org.

A board of managers runs the district, which encompasses about 159 square miles. The managers meet monthly in Annandale.



DURASUPREME
C A B I N E T R Y®



HIRING

LEARN HOW TO CRAFT
DREAM KITCHENS WITH US

NO EXPERIENCE NEEDED

\$20+ PER HOUR

+\$3 SHIFT DIFF. 2ND SHIFT

WORK LOCAL!
ONLY 15 MINS FROM ANNANDALE

OPPORTUNITIES IN EVERY DEPARTMENT

Enjoy **Simply Supreme Benefits**

→ Health Insurance
→ Dental Insurance
→ Vision Insurance
→ Life Insurance
→ 401K Company Match

→ Paid Vacation
→ Paid Personal Time
→ Paid Holidays
→ Product Discounts
→ Plus MORE!

APPLY & LEARN MORE ONLINE:

DURASUPREME.COM/CAREERS

300 DURA DRIVE • HOWARD LAKE • MINNESOTA



SOUTH HAVEN

Situated near the western edge of Wright County is South Haven, a city of just under 200 people located five miles northwest of Annandale on Highway 55. The community features restaurants and other stores and is close to several resorts and public water areas.

A city park includes a baseball field and playground equipment for children, which could be upgraded this summer. The city also has a wastewater treatment plant and sewer system that serves about 90 homes and businesses.

In 2013 the city completed construction of a new city hall-community building on Main Street. The new hall has brought an updated look to the community and is used for government and community activities.

South Haven has an active fire department, which formed a rescue squad in 2007 that responds to car crashes and other emergencies. The department hosts its annual smelt fry in early May.

One of the city's biggest events is the South Haven Sportsmen's Club fish fry, which is held in April, the first in 1938. The event typically attracts well over 1,000 visitors at the fire hall.

The popular eating place Mom's Place was sold in the spring of 2022, but re-opened later that summer as the Agave Mexican Restaurant. It, too, has become a popular destination for those seeking delicious food from south of the border.

The Bedrock Bar and Grill is also a Main Street fixture, and South Haven Sports carries groceries, gas, bait and much more.



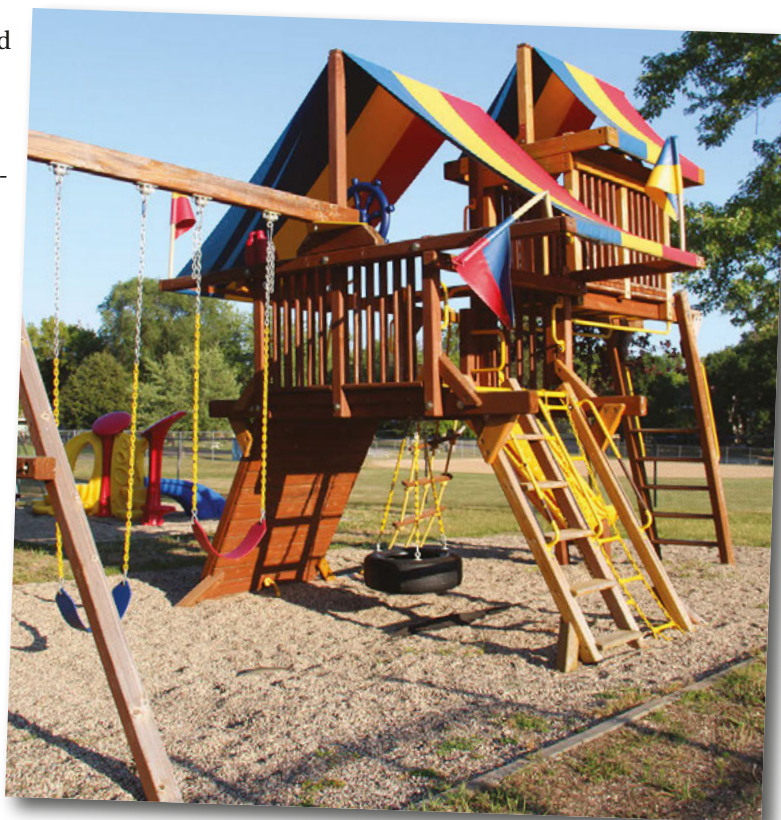
Starting in the summer of 2022 and continuing this year, the city is undergoing major renovations to infrastructure that will include new streets, water and sewer lines, and the replacement of the city's water tower.

City leadership

Norm Bodeker is the mayor and Melissa Stenson is the city's clerk-treasurer. The city council meets monthly.

For more information, call the South Haven City Hall at 320-236-2424 or email sohavenc@lakedalelink.net.

The city's website is www.cityofsouthhavenmn.com.



An active chamber

The Annandale Area Chamber of Commerce is a 100-plus member organization which actively promotes the Annandale area. The chamber holds monthly luncheon meetings (usually the second Wednesday) and other social events throughout the year. Members are notified in advance of the events. Look for monthly updates in the Annandale Advocate.

For more information, visit the website, email info@annandalechamber.org, the chamber's Facebook page, write Annandale Area Chamber of Commerce, PO Box 417, Annandale, MN 55302, or contact one of the officers listed below. The website is: www.annandalechamber.org.

Officers

President Stacy Rasset, 320-274-8216
Treasurer Aleah Edwards, 320-274-8827
Secretary..... Kelly Hinnenkamp, 320-274-3055

Other members of the chamber's board of directors are David Burd, Mike Zieska, Holly Peterson and Mona Volden.

Amanda Amundson handles the chamber's communications. For questions, email info@annandalechamber.org.

Chamber MEMBERS

Above & Beyond Therapeutic Services. 320-200-1181
Alisma, LLC..... 844-830-0115
All Star Trophy & Awards..... 320-259-6347
Allina Health-Annandale Clinic..... 320-274-344
Allina Health - Buffalo Hospital..... 763-684-7025
America's Best Inn 320-274-3006
Anchor Dock & Lift 320-274-6500
Annandale Advocate 320-274-3052
Annandale Area Community Team (ACT)
..... 612-247-9881
Annandale Community Education..... 320-274-3058
Annandale Dairy Queen 320-274-3479
Annandale Eye Clinic..... 320-274-3701
Annandale Family Sports & Chiropractic
..... 320-274-3060
Annandale Health & Community Services
..... 320-274-2579
Annandale Improvement Club
Annandale Lions Club 320-274-2563
Annandale United Methodist Church.. 320 274-5127
APP Roll-off, LLC 320-309-3629
Athman Metal Fabrication 320-333-4005
Backyard Reflections, Inc..... 320-275-9908
Billy D's Crooked Tavern..... 320-274-6184
Bittersweet Farms, LLC
Bolton & Menk, Inc..... 320-640-3393
C & W Spinning, Inc. 320-963-3534
Caouette Creations 320-493-4992
Cardinal Athletic Foundation
Carefree Lawn Sprinklers..... 320-963-2178
City of Annandale 320-274-3055
Clearwater Forest Resort Community 320-274-8857
Clearwater River Watershed District.. 320-274-3935
Clearwater Truck Center 320-558-6565
Country Chevrolet 320-274-3064
Custom Door Sales, Inc..... 763-535-0042
Custom Towing..... 612-280-2019
Deacon Amundson Photography
Dingmann Funeral Care 320-274-8811
E.A. Sween..... 320-261-5244
Eastview Mobile Home Park..... 320-274-8187
Edina Realty Home Services..... 320-282-5656
Edmonson Ink & Drafting Design Co. . 320-223-1519
Edward Jones 320-274-2302
Elevate Realty..... 320-291-1388

FS3, Inc..... 320-274-7223
Heartland Evangelical Free Church 320-274-8951
Hoeft Party Rentals..... 320-309-2193
Homestyle Country Cafe, LLC 320-274-1404
Howard's Plumbing, Heating
& Air Conditioning, Inc. 320-274-8913
In Hot Water Coffee Shop 320-274-6828
Independent AMSOIL Dealer..... 612-760-0320
J&J Marine, Inc..... 320-236-3625
Jack's of French Lake 320-274-8495
JB Esthetics
Jimmy's Pizza 320-274-2522
Just North of Memphis..... 612-306-1432
Kat's Lake Country Antiques 320-274-1128
Kaz Hardware and Rental 320-274-5214
Keys To Living Light..... 612-508-3396
Kiwanis Club of Annandale
Lake Central Bank 320-274-8216
Lake Central Insurance Services, LLC 320-274-8216
Lake Central Investments 320-274-8216
Lake Country Cabinets and Trim 320-274-2494
Lake Region Coop..... 320-963-6074
Lake Union Evangelical Covenant Church
..... 320-298-2992
Lake to Lagoons Travel, LLC
Lakeside Garden Center..... 612-351-6363
Lakeside Nutrition 320-249-7299
Laketown Dental 320-274-8555
Lundeen Bros., Inc. 320-274-8211
M & M Bus Service, Inc. 320-274-8313
Malco 320-274-8246
McDonald's of Annandale..... 320-274-5958
MCP Collision & Glass 320-274-8283
Midwest Macrons 320-428-1565
Miller's Jewelry 320-274-5313
Minnesota Department of Health..... 320-223-7300
Minnesota Pioneer Park..... 320-274-8489
Momentum Truck Group
Ms. Victoria Morgan
Norgren Builders Inc. 320-274-5884
Northwestern Mutual
O.T.S. Grading and Landscaping..... 320-274-3739
Oak Realty 320-274-5737
Peak Spray Foam Insulation, LLC 612-562-7823
Petty Brothers Meats, Inc..... 320-274-5615
Rainville Carlson, Inc..... 612-823-5229
RE/MAX Advantage Plus 320-274-2233
Reich's Plumbing..... 320-274-3016
Renewal By Andersen

Events and projects. . .

- Annandale Expo
- Annandale All-City Garage Sale
- Chili Cook-off
- Summer Cruise Ins
- Annandale's 125-plus year old Fourth of July Celebration, featuring a large parade, the Annandale Queen Coronation and fireworks in the evening at the municipal park, and much more
- Float which can be seen in the Fourth of July Parade and many other area parades
- Annual Golf Tournament
- Trick-or-Treat at Chamber businesses
- After-hours winter social
- Regular meetings and social events
- New business welcoming
- Downtown Committee

Room to Grow Therapy & Consulting, LLC
..... 320-281-6800
Ruby Ribbon with Deb
Running Tangents
Sand Profile 320-274-2940
SCH Adult Addiction Services
Shear Style Hair and Spa 320-274-5717
Simplicity Organization, MN
South Side Party Rental
Southbrook Golf Club 320-274-2341
Southbrook Grille 320-274-6181
Spilled Grain Brew House 320-274-1129
St Ignatius Catholic Church 320-274-8828
St. John's Lutheran Church 320-274-8827
Star Bank 320-274-2265
State Farm Insurance 320-274-3185
SureLook Home Watch 612-325-6614
Sticks & Stones Inc..... 320-274-6853
Sweet Escape 320-274-1632
Terra Nova Public Charter School
The Thayer 320-274-2970
The Body Strength Training Shed 320-260-2081
The Lakes Community Church..... 320-261-5300
Think Up Technologies..... 763-238-6443
Tin Roof Candle Company 320-291-4437
TNT Communications MN, LLC 320-274-8684
Tom N Gary's Bowling Center 320-274-2695
Truck Mate Toppers..... 320-274-3008
True Friends 952-852-0101
United Way of Central Minnesota 320-252-0227
Vintage Patina 320-980-7977
Waterfront Lakeside Grille, The 320-274-9988
West Central Sanitation 800-246-7630
Willow
Wright County Economic Development
..... 763-496-5632
Wright County Swappers Meet 320-274-9005
Wright Hennepin Cooperative 763-477-3000
Young & Brown LLC 320-274-8221
Zahler Photography..... 320-274-8800
Zion Evangelical Lutheran Church..... 320-274-5226



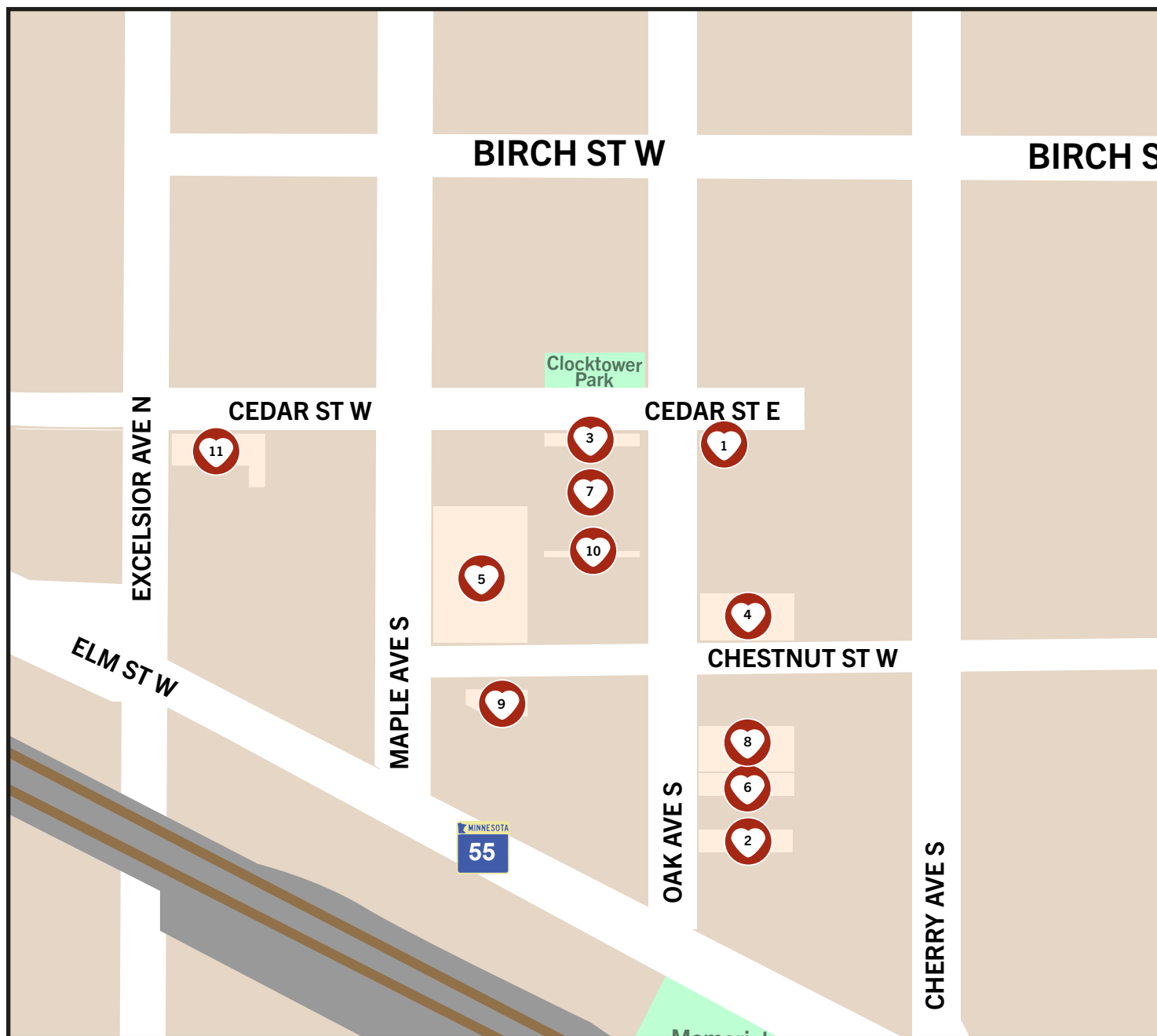
Area Advertisers



1. **10,000 Lakes Recreation**
300 Oak Ave. N, Annandale
www.facebook.com/10000-Lakes-Recreation-Annandale-HiWater-110867061915983/
2. **A-1 Marine**
305 W Commercial Dr, Annandale
320-274-8227
www.a1marineinc.com
3. **Annandale Paintball**
13659 100th St. NW, South Haven
320-274-8242
Follow us on Facebook www.facebook.com/annandalepaintball/
4. **Backyard Reflections**
940 Elm St E, Annandale, MN 55302
320-274-6336
www.backyardmn.com
5. **Clearwater Travel Plaza**
950 MN-24, Clearwater
320-558-2261
www.clearwatertravelplaza.com
6. **Dingmann Funeral Care**
305 Park St E, Annandale
320-274-8811
www.dingmannfuneral.com
7. **Lake Augusta Cabins**
10049 Newton Ave. NW,
South Haven
952-406-0640
www.lakeaugustacabins.com
8. **Laketown Dental**
300 Park St E, Annandale, MN 55302
320-274-8555
www.laketowndental.com
9. **Malco**
14080 Hwy 55, Annandale, MN 55302
320-274-8246
www.malcotools.com
10. **O'Brothers Wine & Spirits**
Hwy. 55 E., Annandale
320-274-5737
www.obrotherswineandspirits.com
11. **Oak Realty**
720 Elm St E, Annandale
320-274-2019
www.oakrealtymn.com
12. **RE/MAX Advantage Plus**
270 Elm St E, Annandale
320-274-2233
www.therealestateadvantage.com
13. **Spilled Grain Brewhouse**
300 Elm St E, Annandale, MN 55302
320-274-1129
www.spilledgrainbrewhouse.com
14. **Star Bank**
460 Elm St. E, Annandale
320-274-2265
www.starbank.net
15. **Subway**
740 Elm St E, Annandale, MN 55302
320-274-7100
restaurants.subway.com
16. **Truck Mate Toppers**
540 Elm St. E, Annandale
320-274-3008
www.truckmatetoppers.com
17. **Whispering Pines Golf Course**
8713 70th St NW #2465, Annandale, MN 55302
320-274-8721
www.whisperingpinesgolf.com

Scan the code below view map interactively
or go online to www.annandaleadvocate.com/area-info/35039/hotladmap





Downtown Advertisers

1. **American Family Insurance**
99 Oak Ave N, Annandale, MN
55302
320-274-5900
www.amfam.com
2. **Annandale Advocate**
73 Oak Ave. S, Annandale, MN
55302
320-274-3052
www.annandaleadvocate.com
3. **Annandale Laundromat**
94 Oak Ave N, Annandale, MN
55302
320-274-5307
4. **Kaz Hardware**
19 Oak Ave. N, Annandale
320-274-5214
Kazhardware.doitbest.com
5. **Lake Central Bank**
40 Chestnut St., Annandale
320-274-8216
www.lakecentralbank.com
6. **Lu's Cafe and Catering**
53 Oak Ave S, Annandale, MN
55302
320-274-5034
7. **Miller's Jewelry**
86 Oak Ave N, Annandale, MN
55302
320-274-5313
www.millers-jewelry.com
8. **Rendezvous Bar & Grill**
35 Oak Ave S, Annandale, MN
55302
320-261-5167
annandalebarandgrill.com
9. **The Stadium Bar & Grill**
45 Chestnut St. NW, Annandale
320-274-6646
<https://www.facebook.com/thestadiumsportsbarandgrill>
10. **Tin Roof Candle Company**
46 Oak Ave N, Annandale, MN
55302
320-291-4437
tinroofcandlecompany.com
11. **Vintage Patina**
131 Cedar St. W, Annandale
320-261-5267
See Facebook For Details -www.facebook.com/VintagePatinaAnnandale

HEART OF THE LAKES AREA SUMMER GUIDE

Index of Advertisers

10,000 Lakes Recreation	57	Heartland	68	Petty Brothers Meats	32
A-J Acres	63	Homestyle Country Cafe	32	Re/Max Advantage Plus	53
A.M. Maus & Son	39	Holy Cross Lutheran Church.....	68	Red Goat Bar and Grill, The.....	31
Anchor Dock & Lift.....	79	Howard's Plumbing Heating & A/C	13	Reich's Plumbing & Heating	15
Annandale Advocate.....	24	In Hot Water.....	32	Rendezvous Bar & Grill	35
Annandale Farmers Market.....	17	J&J Marine	53	Schultz Soft Water	29
Annandale Health & Community Services	32	Kaz Hardware.....	26	Silver Bullet Saddle Club	14
Annandale Laundromat	10	Kimball Christian Church.....	69	Solutions Plumbing & Mechanical	78
Annandale Edina Realty	23	Kimball Garage	39	Southbrook Golf Course	65
Annandale United Methodist Church.....	68	Kimball Golf Club	67	South Haven Sports	51
American Family.....	13	Kimball Parts City	39	Spilled Grain Brewhouse	33
Bedrock Bar & Grill	36	Knaus Sausage House	33	Star Bank.....	12
Bethlehem United Church of Christ	68	Kraemer Trucking & Excavating, Inc.....	46	SureLook Home Watch	39
Bruce Prevost Construction, Inc.....	Back	Lake Central Bank	2	St. Ignatius Catholic Church	69
Backyard Reflections.....	5	Lake Central Insurance	4	St. John's Lutheran Church	68
Buffalo Chamber of Commerce		Lake Country Bible Church.....	69	St. Mark's Episcopal Church.....	68
Events	9	Lakeside Garden Center.....	26	Stadium Bar and Grill	33
Shopping	37	Lakes Landscaping	46	Stellis Health	16
Cap Custom Homes	78	Laketown Dental.....	28	Subway.....	35
City of Annandale		Land O' Lakes Oil & Propane	38	Sylvia Area Storage Units	27
DMV.....	58	Little Jim's Sports	7	Tin Roof Candle Co.	26
Working For You	55	Lu's Cafe & Catering.....	35	Truck Mate Toppers	10
Clearwater Parts City	50	M&M Express Sales & Service.....	15	Truman Welters.....	57
Clearwater Travel Plaza.....	36	Malco	28	Vintage Patina	24
Custom Towing	37	Maple Lake American Legion	31	Waterfront Lakeside Grille	3
CW Outfitting.....	60	Maple Lake Lumber	15	Werner Well Drilling.....	11
Dairy Queen.....	33	Maple Lake Wine & Spirits.....	36	West Metro Real Estate Group.....	11
Dassel History Center & Ergot Museum ..	38	Miller's Jewelry	25	Whispering Pines Golf Course.....	66
Dassel Liquors	36	Minnesota Pioneer Park.....	9	Worshipping Congregation of Grace & Crow River Lutheran	69
Dingmann Funeral Care	38	Norgren Builders	11	Wright County Solid Waste	58
Dura Supreme	71	O'Brother's Wine & Spirits.....	33	Wright County Swappers Meet	16
E.A. Sween	35	Oak Realty	7	Zion Evangelical Lutheran Church	68
Farm-Rite Equipment.....	50	Our Saviour's Lutheran Church.....	69	Zion United Methodist Church.....	68
French Lake Liquor	33	Paramount Center for the Arts.....	34		

MAKING DREAMS INTO REALITY!



Design • Build • Renovate

Alex Evavold

Owner/Licensed
General Contractor
BC#637194

CHECK OUT OUR QUALITY CRAFTSMANSHIP ONLINE!



CENTRAL MINNESOTA
BUILDERS
ASSOCIATION

320.267.8591 • WWW.CAPCUSTOMHOMES.COM

WHEN YOU'VE GOT PROBLEMS
YOU NEED



OUR SERVICES INCLUDE

- | | |
|-----------------------------|------------------------|
| ✓ Plumbing | ✓ Service |
| ✓ Water Conditioning | ✓ Maintenance Programs |
| ✓ In-floor / Boiler Heating | ✓ New Construction |
| ✓ Heating & Ventilation | ✓ Renovation |

CALL US NOW! 320-267-8591

al.evavold@solutionsplumbingmech.com



www.solutionsplumbingmech.com





ANCHOR DOCK & LIFT



World Class Products, Exceptional Service
We carry top quality

Docks ■ Boat Lifts ■ Accessories ■ Kayaks

Annandale • 320-274-6500
WWW.ANCHOR-DOCK.COM

your *Dream* your home

New construction
or remodeling,
contact us and
we'll guide you
through the
entire process!



Bruce Prevost Construction, Inc.

Design • Build • Remodel

Bruce@bruceprevostconstruction.com

See our online photo gallery at:
www.bruceprevostconstruction.com
and on Facebook!

320-333-9820



**Building
Relationships
Since 1984**



MN Lic. BC003541